

CITY OF MADISON MADISON MUNICIPAL BUILDING EXTERIOR MASONRY STUDY

This study was conducted by the City of Madison to determine the extent of the masonry distress to the exterior stone facade. The study was completed in the spring of 2016. The results of this study was the basis for determining the type and extent of repair work to be performed on each stone identified as having a fault. Please note; not all stones indicated with a fault code will received repair work as part of this project. For the actual repair work to be performed, refer to the plans and specification.

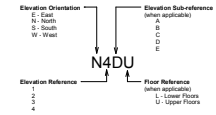
MASONRY DEFECT SYMBOLS

- Stone has defect
- ▼ Stone has crack (CR)
- ▲ Stone has chip (CP)
- ▲ Stone has exfoliation (EX)
- ▲ Stone has spalling (SP)

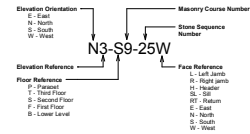
MASONRY DISTRESS CODE DEFINITIONS

- CS Crack Single- indicate length and width type, hairline (HL) or open crack (OC or OP)
- CM Crack Multiple- indicate # of cracks, total length and width type
- FH1 Fastener Hole with fastener still in place, indicate # and size
- FH2 Fastener Hole with anchor/fastener removed, indicate if spalled, # and size
- FH Metal Cap Concealed or exposed fasteners in place anchoring parapet metal cap to capstone
- FH Metal Flashing Concealed or exposed fastener in place anchoring roof flashing to wall or window sill
- SP1 Spalled Shallow, surface less than 1/4" in depth, indicate area in sq. in.
- SP2 Spalled Deep, greater than 1/4" in depth, indicate area in sq. in.
- EC1 Edge Chip greater than 3/8" and less than 1/2" from edge of stone, indicate length- (all lesser chips are assumed to be repaired as part of repointing the joints)
- EC2 Edge Chip greater than 1/2" from edge of stone, indicate length or area in sq. in.
- HL Indicates a Hairline crack: thickness from noticeable crack to 0.060" (thickness of a dime, 1/16")
- OC or OP Indicates if crack is open greater than 0.060"
- SL Indicates if sealant has been placed over a crack or defects from a previous repair
- GM Indicates grinder marks where previous repair work has damaged the stone face
- PP Indicates patching material has been used in a previous repair.

ELEVATION SHEET NUMBERING SYSTEM



MASONRY TAG NUMBER CODES



- 1. Stone masonry is tagged per primary face.
- 2. For stone masonry with multiple exposed faces, face reference indicates orientation of secondary face.

Sheet List

Sheet Number	Sheet Name
0.1	Cover Sheet
1.0	Masonry Elevations
1.1	Masonry Elevations
2.0	E1 Stone Masonry Defect Schedules
2.1	E2 Stone Masonry Defect Schedules
2.2	E3 & E4 Stone Masonry Defect Schedules
2.3	N1 Stone Masonry Defect Schedules
2.4	N2 Stone Masonry Defect Schedules
2.5	N3 Stone Masonry Defect Schedules
2.6	S1 Stone Masonry Defect Schedules
2.7	S2 & S3 Stone Masonry Defect Schedules
2.8	S2 P, S1 Stone Masonry Defect Schedules
2.9	S3 Stone Masonry Defect Schedule
2.10	W1 Stone Masonry Defect Schedules
2.11	W2 Stone Masonry Defect Schedules
2.12	W3 Stone Masonry Defect Schedules
E1TL	Masonry Detail Elevations / Sections
E1TU	Masonry Detail Elevations / Sections
E2AL	Masonry Detail Elevations / Sections
E2AU	Masonry Detail Elevations / Sections
E2BL	Masonry Detail Elevations / Sections
E2BU	Masonry Detail Elevations / Sections
E2CL	Masonry Detail Elevations / Sections
E2CU	Masonry Detail Elevations / Sections
E3L	Masonry Detail Elevations / Sections
E3U	Masonry Detail Elevations / Sections
E4A	Masonry Detail Elevations / Sections
N1TL	Masonry Detail Elevations / Sections
N1TU	Masonry Detail Elevations / Sections
N2A	Masonry Detail Elevations / Sections
N2B	Masonry Detail Elevations / Sections
N3L	Masonry Detail Elevations / Sections
N3U	Masonry Detail Elevations / Sections
S1L	Masonry Detail Elevations / Sections
S1U	Masonry Detail Elevations / Sections
S2AL	Masonry Detail Elevations / Sections
S2BL	Masonry Detail Elevations / Sections
S2BU	Masonry Detail Elevations / Sections
S2CL	Masonry Detail Elevations / Sections
S2CU	Masonry Detail Elevations / Sections
S2LU	Masonry Detail Elevations / Sections
S2RL	Masonry Detail Elevations / Sections
S2RU	Masonry Detail Elevations / Sections
S3L	Masonry Detail Elevations / Sections
S3U	Masonry Detail Elevations / Sections
W1L	Masonry Detail Elevations / Sections
W1U	Masonry Detail Elevations / Sections
W2AL	Masonry Detail Elevations / Sections
W2BL	Masonry Detail Elevations / Sections
W2BU	Masonry Detail Elevations / Sections
W2CL	Masonry Detail Elevations / Sections
W2CU	Masonry Detail Elevations / Sections
W3L	Masonry Detail Elevations / Sections
W3U	Masonry Detail Elevations / Sections
W4A	Masonry Detail Elevations / Sections

MSR 710 South 2nd Street, 8th Floor
Madison, Wisconsin 53701-2380
Architectural: (608) 251-3333
Interior and Urban Design: (608) 251-3333
www.msrblog.com

Ken Saki Design, Inc.
360 South Parkview Dr
Madison, WI 53705
608.251.3800 W

Structural Engineering Technology, Inc.

KWW
1800 Conroy Way, Suite
200
Madison, WI 53713
608.252.8800 W

MEP Engineers
MEP Associates
500 Blue Canyon Blvd, Suite 175
Madison, WI 53713
608.274.9122 W

Lighting Designer
Gallina Design
1000 Conroy Way, Suite
200
Madison, WI 53713
608.251.3800 W

Preservation Architect
Charles Quagliana, AIA
1601 Monona Way
Madison, WI 53706
608.251.3800 W

Building Envelope Consultant
InSite Consulting Architects
1111 East Street, Suite 200
Madison, WI 53703
608.251.3800 W

Fire & Code Consultant
Summit Fire Consulting
1000 Monona Way, Suite 200
Madison, WI 53703
608.251.3800 W

Architectural Consultant
KRA
1800 Conroy Avenue South, Suite 200
Madison, WI 53713
608.251.3800 W

CIVIL ENGINEERS
1800 Conroy Avenue, Suite 200
Madison, WI 53713
608.251.3800 W

Madison Municipal Building
215 Martin Luther King, Jr. Blvd
Madison, WI 53703

7939
BID ISSUE

7939
BID ISSUE

7939
BID ISSUE

7939
BID ISSUE

7939
BID ISSUE

7939
BID ISSUE

7939
BID ISSUE

7939
BID ISSUE

7939
BID ISSUE

7939
BID ISSUE

Cover Sheet

0.1

E1 Schedule of Stone Defects - East Elevations										
ELEVATION ORIENTATION	ELEVATION REFERENCE FLOOR REFERENCE	MASONRY COURSE NUMBER	STONE SEQUENCE NUMBER	PHOTO TAG	GENERAL DEFECT CODES	CRACKED DEFECT CODES	CHIPPED DEFECT CODES	SPALLED DEFECT CODES	EXFOLIATION DEFECT CODES	COMMENTS
E	1	B	5	NS1	E1-B5NS1		CM HL 4",4"	SP2-30 sq in.		
E	1	B	5	NS2	E1-B5NS2		CS HL 4"	EC2-4"		
E	1	B	5	NS3	E1-B5NS3			EC2-6"		
E	1	B	6	NS1	E1-B6NS1			EC1-1",1"		
E	1	B	6	NS1-R	E1-B6NS1-R			SP2 SL-78sq in		
E	1	B	6	NS2	E1-B6NS2			EC2 PP-6", EC2-3", 2"		
E	1	B	6	NS2-L	E1-B6NS2-L			EC1-1",1",1"		
E	1	B	7	1	E1-B71			EC1-2",2", EC1-1",3", *36"		
E	1	B	7	NS1	E1-B7NS1		CS HL 2"			
E	1	B	7	NS2	E1-B7NS2	PA GM 2", Concrete Staining				
E	1	B	7	NS2-L	E1-B7NS2-L			EC1-1"		
E	1	B	7	SS1	E1-B7SS1			EC1-1"		
E	1	B	7	SS2	E1-B7SS2			EC2-14"		
E	1	B	7	SS3	E1-B7SS3			EC1-5", EC2-3"		
E	1	B	8	1	E1-B81			EC2-2",3",11"		
E	1	B	8	NS2	E1-B8NS2	PA GM 2", Concrete Staining				
E	1	B	8	SS1	E1-B8SS1			EC1-2",2",4",5"		
E	1	B	8	SS2	E1-B8SS2		CS HL 4"	EC1-3", EC2-2", 8"		E1-16 sq in
E	1	B	9	1	E1-B91			EC1-1",1",4", EC2-2", *4"		
E	1	B	9	1	S E1-B91S	Concrete		EC2-2",3",2"		
E	1	B	9	NS2	E1-B9NS2			EC1-1",1"		
E	1	B	9	NS2-L	E1-B9NS2-L			EC1-1", EC2-3"		
E	1	B	9	SS1	E1-B9SS1			EC2 PP-2", EC2-6"		
E	1	B	9	SS2	E1-B9SS2			EC1-3", EC2-8 sq in		
E	1	B	9	SS3	E1-B9SS3			EC2 PP-2"		
E	1	B	10	1	E1-B101	FH1 Repair of Removed Conduit/box		EC1-2", EC2-1",3",3"		
E	1	B	10	NS1	E1-B10NS1			EC2-4"		
E	1	B	10	NS3	E1-B10NS3	PA GM 10"				
E	1	B	10	SS1	E1-B10SS1		CS OC-10"			
E	1	B	10	SS2	E1-B10SS2			EC1-1", EC2-10", 2", 3", 40 sq in		
E	1	B	11	1	E1-B111			EC2 PP-2"		
E	1	B	11	2	E1-B112			EC2-3"		
E	1	B	11	NS1N	E1-B11NS1N	PA GM 3"		EC1-2",2", 3", EC2-3", EC2 PP-2", EC2 SL-5 sq in		
E	1	B	11	NS1S	E1-B11NS1S					
E	1	B	11	NS1T	E1-B11NS1T	SL Marks & Rust Stain		EC2 SL-20 in sq. 3"		E1-30 sq in
E	1	B	11	NS2S	E1-B11NS2S			EC2-4", CS OC10"		
E	1	B	11	NS2T	E1-B11NS2T			EC1 EC1-10", EC2-2", 2", 3"		
E	1	B	11	NS3N	E1-B11NS3N			EC1 PP-2", EC1-2"		
E	1	B	11	NS3S	E1-B11NS3S			EC2-20"		
E	1	B	11	NS3T	E1-B11NS3T			EC2 PP-6", EC2-2"		E1 Light
E	1	B	11	NS4S	E1-B11NS4S			EC2-25", EC2 PP-5"		
E	1	B	11	NS4T	E1-B11NS4T			EC1-4", EC2 PP-2", 2", 3", 46 sq in. flat		
E	1	B	11	NS5N	E1-B11NS5N		CS OC 4"	EC1-2"		E1 Light
E	1	B	11	NS5S	E1-B11NS5S			EC2 PP-3", 7"		E1 Light
E	1	B	11	NS5T	E1-B11NS5T			EC2 PP-4"		E1-20 sq in
E	1	B	11	SS1N	E1-B11SS1N					SP2-50 sq in

E1 Schedule of Stone Defects - East Elevations										
ELEVATION ORIENTATION	ELEVATION REFERENCE FLOOR REFERENCE	MASONRY COURSE NUMBER	STONE SEQUENCE NUMBER	PHOTO TAG	GENERAL DEFECT CODES	CRACKED DEFECT CODES	CHIPPED DEFECT CODES	SPALLED DEFECT CODES	EXFOLIATION DEFECT CODES	COMMENTS
E	1	B	11	SS1T	E1-B11SS1T	SL Marks & Rust Stain				
E	1	B	11	SS3S	E1-B11SS3S			EC1-2", EC2-3"		
E	1	B	11	SS3S	E1-B11SS3S			EC1-1",2", 2", 6"		
E	1	B	11	SS5E	E1-B11SS5E			EC2-20"		
E	1	B	11	SS5N	E1-B11SS5N			EC1-2",2",3"		
E	1	B	11	SS5S	E1-B11SS5S		CS HL 9"			
E	1	F	1	2	E1-F1-2			SP2 SL-300 sq in		
E	1	F	1	3	E1-F1-3	CM HL 3", 8" SL		SP2 SL-24 sq in		
E	1	F	1	5	L E1-F1-5L					E1-48 sq in
E	1	F	1	8	E1-F1-8	CS HL SL-6"		SP2-120 sq in (2.5" deep)		
E	1	F	2	2	E1-F2-2	CM HL 12", 4"				
E	1	F	2	3	E1-F2-3	CS HL-6"				
E	1	F	2	4	L E1-F2-4L					E1 Light-150 sq in
E	1	F	4	1	S E1-F4-1S	CS HL-1"				
E	1	F	6	1	S E1-F6-1S	CS HL-2"	EC1-1"			
E	1	F	10	1	E1-F10-1			EC2-2",3"		
E	1	F	10	2	E1-F10-2	CS HL-12"				
E	1	F	10	5	E1-F10-5			EC1-1", 5"		
E	1	F	11	5	E1-F11-5			EC2-3"		
E	1	F	12	4	E1-F12-4	CS HL-12"				
E	1	F	12	5	E1-F12-5			EC2-3"		
E	1	F	12	6	E1-F12-6	CS HL-10"				
E	1	F	13	4	E1-F13-4	EC2-2"				
E	1	F	13	4	E1-F13-4	EC2-2"				
E	1	F	13	1	E1-F13-1					
E	1	F	13	1	S E1-F13-1S	OC 22"				
E	1	F	13	3	E1-F13-3	CS OP SL-22", CS HL 2"				
E	1	F	13	3	E1-F13-3			EC1-1"		
E	1	F	13	6	E1-F13-6			EC1-2"		
E	1	F	13	8	E1-F13-8	EC1-1", PA GM				
E	1	S	1	2	E1-S1-2	CS HL SL-17"				
E	1	S	1	3	E1-S1-3	CM HL 4", 8", 4"	EC1-2"			
E	1	S	3	2	E1-S3-2			EC1-2"		
E	1	S	3	4	E1-S3-4			EC1-2"		
E	1	S	4	5	E1-S4-5			EC1-1", 8", 3"		
E	1	S	4	6	E1-S4-6	CS HL 10"				
E	1	S	4	7	E1-S4-7	CS HL-3"				
E	1	S	5	5	E1-S5-5			EC1-4"		
E	1	S	7	2	E1-S7-2	CS HL SL-17"		SP2-AS		
E	1	S	9	3	E1-S9-3					
E	1	S	12	4	E1-S12-4			EC2-4"		
E	1	T	1	1	S E1-T1-1S			EC1 PP-1"		
E	1	T	1	4	E1-T1-4	CS HL-12"	EC1 & EC2 Muli			E1
E	1	T	2	2	E1-T2-2			EC1-1"		
E	1	T	2	8	R E1-T2-8R			EC1-8"		
E	1	T	3	1	E1-T3-1			EC1-2"		
E	1	T	3	2	E1-T3-2			EC1 PP-2"		
E	1	T	7	4	E1-T7-4			EC1-1", 3"		
E	1	T	7	5	E1-T7-5			EC1-2"		
E	1	T	8	2	E1-T8-2			EC2 PP-3"		
E	1	T	8	5	E1-T8-5	CS HL-2"				

Grand total: 96

MSR 710 South 2nd Street, 8th Floor
 Milwaukee, Wisconsin 53201-3380
 Phone: 414.224.1100
 Fax: 414.224.1101
 www.msrblog.com

Ken Saki Design, Inc.
 360 South Parkview Dr
 Milwaukee, WI 53219
 414.251.3800

KJWW
 1500 Oakwood Way, Suite
 200
 Wauwatosa, WI 53226
 414.223.8800

MEP Engineers
MEP Associates
 800 West Center Road, Suite 175
 Wauwatosa, WI 53226
 414.251.9122

Lighting Designer
Gallina Design
 2500 County
 Wauwatosa, WI 53226
 414.251.1500

Preparation Architect
Charles Quagliana, AIA
 1600 Milwaukee Ave.
 Milwaukee, WI 53233
 414.224.8100

Building Envelope Consultant
InSite Consulting Architects
 11111 North Central Ave., Suite 200
 Milwaukee, WI 53222
 414.224.8100

Fire & Code Consultant
Summit Fire Consulting
 1000 Wisconsin Ave., 4th
 St. Paul, MN 55102
 612.291.9100

Acoustic Consultant
KRA
 4600 Chicago Avenue South, Suite 200
 Minneapolis, MN 55410
 612.338.1100

Structural
CIVIL ENGINEERS
 300 East Center, Suite 201
 Wauwatosa, WI 53226
 414.251.1100

Madison Municipal Building
 215 Martin Luther King, Jr. Blvd
 Madison, WI 53703

7939
BID ISSUE

E1 Stone Masonry Defect Schedules

E2 Schedule of Stone Defects - East Elevations											
ELEVATION ORIENTATION	ELEVATION REFERENCE	FLOOR REFERENCE	MASONRY COURSE NUMBER	STONE SEQUENCE NUMBER	PHOTO TAG	GENERAL DEFECT CODES	CRACKED DEFECT CODES	CHIPPED DEFECT CODES	SPALLED DEFECT CODES	EXFOLIATION DEFECT CODES	COMMENTS
E	2	B	3	11	E2-83-11					E1-100*	
E	2	B	3	13	E2-83-13					E1-100*	
E	2	B	3	14	E2-83-14						
E	2	B	3	16	E2-83-16						
E	2	B	3	16	R	E2-83-16RT					
E	2	B	4	2	E2-84-2		CS HL-8"	EC2-2"		E1-100*	
E	2	B	4	3	E2-84-3		CM HL 6" 6"			E1-100*	
E	2	B	4	4	E2-84-4					E1-100*	
E	2	B	4	5	E2-84-5					E1-100*	
E	2	B	4	6	E2-84-6					E1-30*	
E	2	B	4	7	E2-84-7					E1-50*	
E	2	B	4	8	E2-84-8					E1-40*	
E	2	B	4	13	E2-84-13					EC1-6"	
E	2	B	4	14	E2-84-14					EC1-1"	
E	2	B	4	15	E2-84-15		EC1-1" 2" 6"				
E	2	B	4	16	E2-84-16					EC1-4"	
E	2	B	4	17	E2-84-17					EC2 PP-8 sq in	
E	2	B	4	19	E2-84-19		CM HL 3" 17"				
E	2	B	5	1	E2-85-1		CM HL 7" 6" 3"				
E	2	B	5	1	R	E2-85-1RT		CS OC-4" Spall			
E	2	B	5	3	E2-85-3		CM HL 2" 2"			EC1-2"	
E	2	B	5	4	E2-85-4		CM-HL 2", OC SL 6"			EC2-15 sq in	
E	2	B	5	4	S	E2-85-4SL		CM-HL 4", OC SL 12"			
E	2	B	5	5	E2-85-5			EC2 20 sq in			
E	2	B	5	6	E2-85-6			EC2-12"			
E	2	B	5	8	E2-85-8		CM HL 11 2"				
E	2	B	5	9	E2-85-9		CS HL 2"				
E	2	B	5	10	E2-85-10		CS HL 2"				
E	2	B	5	13	E2-85-13		CM HL 3" 3" 2"				
E	2	B	5	14	E2-85-14		CS HL 3"				
E	2	B	5	15	E2-85-15			EC2-20"			
E	2	B	5	16	E2-85-16		CS HL SL 3"			EC2-3"	
E	2	B	5	17	E2-85-17		CS HL SL 4"				
E	2	B	5	2	E2-86-2		CS HL SL 4"				
E	2	B	6	2	E2-86-2		CM HL 6" 3"				
E	2	B	6	4	L	E2-86-4L				EC1-6"	
E	2	B	6	16	L	E2-86-16L		CS HL SL 6"			
E	2	B	6	18	E2-86-18					EC1-1"	
E	2	B	6	18	R	E2-86-18R				EC2-8"	
E	2	B	7	2	E2-87-2		CS HL SL 17"				
E	2	B	8	16	L	E2-88-16L				EC1-1"	
E	2	B	9	1	E2-89-1					EC1-2"	
E	2	B	9	2	E2-89-2		CM HL 4" SL 4"				
E	2	B	9	3	L	E2-89-3L				EC2 PP-20 sq in	
E	2	B	9	7	E2-89-7		CS HL 16"				
E	2	B	9	11	L	E2-89-11L				EC2-2"	
E	2	B	10	5	E2-810-5					EC1-2" 6"	
E	2	B	10	6	E2-810-6					EC2-4"	
E	2	B	10	7	E2-810-7		CS HL 2"				
E	2	B	10	14	E2-810-14					EC1-2"	
E	2	B	10	17	E2-810-17					EC1 PP-1"	
E	2	B	10	19	E2-810-19					CS HL 22" Natural	
E	2	B	11	3	PA	GM 3"					
E	2	B	11	5	E2-811-5					EC2-8"	
E	2	B	11	9	E2-811-9		CS HL SL 20"				
E	2	F	1	1	R	E2-F1-1RT				EC2-3"	
E	2	F	1	5	E2-F1-5					EC1-1"	
E	2	F	1	9	E2-F1-9					EC2-4" 4"	
E	2	F	1	14	PA	GM 2"					
E	2	F	1	18	E2-F1-18		CM HL 3" 4"				
E	2	F	1	19	E2-F1-19		CS OP SL 6"				
E	2	F	1	20	E2-F1-20		CS OP SL 8"				
E	2	F	1	21	R	E2-F1-21RT		PA GM 1"			
E	2	F	2	1	E2-F2-1					EC2-4", EC12"	
E	2	F	2	5	E2-F2-5		CS HL 6"				
E	2	F	2	6	E2-F2-6					EC1-2"	
E	2	F	2	8	E2-F2-8		CS HL 2"				
E	2	F	2	9	E2-F2-9		CS HL SL PP-17"				
E	2	F	2	15	E2-F2-15		CM HL 10" 17"			EC1-3"	
E	2	F	2	17	E2-F2-17		CS OC SL 17"				
E	2	F	2	18	E2-F2-18		CS HL SL 17"				
E	2	F	2	19	E2-F2-19		CS HL 3"				
E	2	F	3	2	E2-F3-2		CS HL 12"				
E	2	F	3	4	E2-F3-4		CM HL 1" 1" 1"				
E	2	F	3	12	S	E2-F3-12SL		FH1-3/8"		EC2-2", EC1-2"	
E	2	F	3	14	L	E2-F3-14L		CS HL 12"			
E	2	F	4	2	E2-F4-2					EC1-1"	
E	2	F	4	4	E2-F4-4		PA GM 3"				
E	2	F	4	5	E2-F4-5		PA GM 1"				
E	2	F	4	8	E2-F4-8					EC2-2"	
E	2	F	4	10	E2-F4-10		CS HL 8"				
E	2	F	4	13	E2-F4-13						
E	2	F	4	16	E2-F4-16		PA GM 2"				
E	2	F	4	17	R	E2-F4-17R		CM HL 14" 3" 1" 1"			crack developing into spall
E	2	F	5	2	E2-F5-2		CS HL SL 17"				
E	2	F	5	3	E2-F5-3		CS HL SL 17"				
E	2	F	5	10	E2-F5-10		FH2-2x4 1/4" dia				
E	2	F	5	17	E2-F5-17		CS HL SL 17"				
E	2	F	6	13	E2-F6-13		FH2-1 1/4" 3/8"				
E	2	F	6	15	E2-F6-15		CS HL 9"				
E	2	F	6	19	E2-F6-19		CS HL SL 17"				
E	2	F	7	10	E2-F7-10		CS HL 4"				
E	2	F	9	4	E2-F9-4					EC1 PP-1"	
E	2	F	9	8	E2-F9-8					EC2 PP-2"	

Grand total: 192

E2 Schedule of Stone Defects - East Elevations											
ELEVATION ORIENTATION	ELEVATION REFERENCE	FLOOR REFERENCE	MASONRY COURSE NUMBER	STONE SEQUENCE NUMBER	PHOTO TAG	GENERAL DEFECT CODES	CRACKED DEFECT CODES	CHIPPED DEFECT CODES	SPALLED DEFECT CODES	EXFOLIATION DEFECT CODES	COMMENTS
E	2	F	9	15	E2-F9-15					EC1-1"	
E	2	F	10	4	E2-F10-4					EC2-4"	
E	2	F	10	14	E2-F10-14					EC1-2"	
E	2	F	11	1	R	E2-F11-1RT				EC1 PP-3"	
E	2	F	11	8	E2-F11-8					EC1-4"	
E	2	F	12	4	E2-F12-4					EC2 PP-2"	
E	2	F	12	10	E2-F12-10					EC2-3"	
E	2	F	12	15	E2-F12-15						
E	2	F	13	8	E2-F13-8					EC2-4"	
E	2	F	13	11	E2-F13-11					EC2-2", EC1-2"	
E	2	F	13	16	E2-F13-16						
E	2	F	13	17	E2-F13-17		FH1-3/8" Top				
E	2	F	13	17	E2-F13-17		FH1-3/8" Top				
E	2	F	1	1	E2-P1-1		PA GM 2"				
E	2	F	1	3	E2-P1-3						
E	2	P	1	4	E2-P1-4					EC1-8"	
E	2	P	1	11	E2-P1-11					CM HL 2'85"	
E	2	P	1	21	E2-P1-21					EC1-1"	
E	2	P	1	23	E2-P1-23					EC1-2" 2"	
E	2	P	1	24	E2-P1-24					EC1-2" 8"	
E	2	P	2	5	E2-P2-5		PA GM 1/2"				
E	2	P	2	20	E2-P2-20					EC1-3"	
E	2	P	3	4	E2-P3-4					EC1-3"	
E	2	P	3	6	E2-P3-6					EC1-2"	
E	2	P	3	6	E2-P3-6					SP2 8sq in	
E	2	P	3	8	E2-P3-8					EC1-2" Top	
E	2	P	3	17	E2-P3-17					EC1-1"	
E	2	P	3	18	E2-P3-18						E1 PP-2 sq in Top
E	2	P	4	2	E2-P4-2		CS HL 3"				
E	2	P	4	5	E2-P4-5					EC1-2"	
E	2	P	4	6	E2-P4-6						E2-16 sq in
E	2	P	4	7	E2-P4-7					EC1-4"	
E	2	P	4	9	E2-P4-9					EC1-1" 3"	
E	2	P	4	10	E2-P4-10					EC1-3"	
E	2	P	4	11	E2-P4-11					EC2-3"	
E	2	P	5	1	R	E2-P5-1RT				EC2-4"	
E	2	P	5	12	E2-P5-12		CS HL 3"				
E	2	P	5	23	E2-P5-23					EC1-3"	
E	2	P	5	33	E2-P5-33					EC1-1"	
E	2	P	5	43	E2-P5-43					EC1-6"	
E	2	P	5	45	E2-P5-45		CS HL 3"				
E	2	P	5	47	E2-P5-47		CS HL 3"				
E	2	P	5	48	E2-P5-48		CS HL 3"				
E	2	S	1	1	E2-S1-1		CS HL 16"				
E	2	S	1	2	E2-S1-2		PA GM 8"				
E	2	S	1	3	E2-S1-3		CS HL 8"				
E	2	S	1	4	E2-S1-4		CS HL 8"			EC2-3"	
E	2	S	1	4	S	E2-S1-4SL		CM HL 8" 6" 8"			
E	2	S	1	6	E2-S1-6		CS HL SL 16"				
E	2	S	1	6	S	E2-S1-6SL		CS HL 2"			
E	2	S	1	10	E2-S1-10		CS HL 16"				
E	2	S	1	10	S	E2-S1-10SL		CS HL SL 8"			
E	2	S	1	11	R	E2-S1-11R				EC1-2"	
E	2	S	1	12	E2-S1-12		PA GM 4"				
E	2	S	1	14	E2-S1-14		CM HL SL 3" 16"				
E	2	S	2	19	R	E2-S2-19R				EC1-2"	
E	2	S	2	22	E2-S2-22					EC1-8"	
E	2	S	2	25	E2-S2-25		CS HL SL 16"				
E	2	S	3	21	E2-S3-21					EC1-2" 8"	
E	2	S	4	1	E2-S4-1					EC1-3"	
E	2	S	4	1	R	E2-S4-1RT				EC1-2"	
E	2	S	4	4	E2-S4-4					EC1-2"	
E	2	S	4	24	E2-S4-24		CS HL 3"			EC1-12"	
E	2	S	5	1	E2-S5-1					EC1-7"	

E3 Schedule of Stone Defects - East Elevations										
ELEVATION ORIENTATION	ELEVATION REFERENCE FLOOR REFERENCE	MASONRY COURSE NUMBER	STONE SEQUENCE NUMBER	PHOTO TAG	GENERAL DEFECT CODES	CRACKED DEFECT CODES	CHIPPED DEFECT CODES	SPALLED DEFECT CODES	EXFOLIATION DEFECT CODES	COMMENTS
E	3B	3	5	E3-B3-3			EC2 PP-3"			
E	3B	3	5	E3-B3-5		CM HL 7'-8"				
E	3B	3	7	E3-B3-7			EC1-3", 3" EC2-3"			
E	3B	5	8	N E3-B3-8N			EC2-12"			
E	3B	4	4	E3-B4-4		CS HL-17"	EC2-4', 4"			
E	3B	5	4	E3-B5-4		CS HL-6"				
E	3B	5	5	E3-B5-5		CS HL-6"				
E	3B	5	6	S E3-B5-6SL		CS HL-12"				
E	3B	5	8	N E3-B5-8N			EC1-6"			
E	3B	6	3	L E3-B6-3L				SP2-12 sq in		
E	3B	6	5	R E3-B6-5R		CS HL-6"	EC2-6"			
E	3B	7	7	N E3-B7-7N			EC1 PP-2"			
E	3B	9	3	E3-B9-3			EC2-2"			
E	3B	9	5	L E3-B9-5L			EC2-12"			
E	3B	9	5	E3-B9-5			EC2-4"			
E	3B	9	5	R E3-B9-5R			EC2-15 sq in			
E	3B	10	5	E3-B10-5		CS OP SL-6"				
E	3B	11	3	E3-B11-3		CS HL SL-3"				
E	3B	11	7	E3-B11-7			EC1 SL-3"			
E	3F	1	1	E3-F1-1	PA GM 1"					
E	3F	1	2	E3-F1-2	PA GM 1"					
E	3F	1	3	E3-F1-3		CS OC SL-6"				
E	3F	1	4	E3-F1-4		CM HL 1'-3"				
E	3F	1	6	E3-F1-6		CS HL SL-3"				
E	3F	2	5	E3-F2-5		CS HL-12"				
E	3F	2	8	E3-F2-8		CM HL-12'-2"				
E	3F	4	4	E3-F4-4		CS OP SL-12"		appears to have spalled		
E	3F	4	4	L E3-F4-4L				SP2-130 sq in		
E	3F	4	8	E3-F4-8		CS HL SL-4"	EC1-3"			
E	3F	5	6	E3-F5-6		CS HL SL-17"	EC1 SL-1"			
E	3F	6	7	E3-F6-7		CS HL-2"				
E	3F	6	8	N E3-F6-8N		CM HL 3'-4"	EC1-2"			
E	3F	7	5	E3-F7-5		CS HL-3"				
E	3F	7	6	E3-F7-6		CM HL 4'-3'-3"				
E	3F	8	4	L E3-F8-4L			EC2 PP-2"			
E	3F	8	8	E3-F8-8			EC1-2", EC2-4"			
E	3F	9	3	E3-F9-3			EC1 PP-2"			
E	3F	9	4	E3-F9-4			EC2-2"			
E	3F	10	7	E3-F10-7		CS OP-3"				
E	3F	11	6	E3-F11-6	Hole 3'8"x3'8"					
E	3F	12	2	E3-F12-2		CS HL-10"				
E	3F	12	8	E3-F12-8		CS HL-3"				
E	3F	12	8	N E3-F12-8N		CM HL 12'-2"				
E	3F	13	4	S E3-F13-4SL		CM HL 30'-6", 6'-4"				
E	3P	1	1	E3-P1-1			EC1-2"			
E	3P	1	6	E3-P1-6	PA GM .2"	CS HL-6"				
E	3P	1	7	E3-P1-7	PA GM 1'-2"	CS HL-2"				
E	3P	2	7	E3-P2-7	Overground Joint		EC1-1"			
E	3P	3	4	E3-P3-4			EC1-2"			
E	3P	4	6	E3-P4-6		CS HL-3"				
E	3P	4	7	E3-P4-7			EC1-2"			
E	3P	5	3	E3-P5-3			EC1-1"			
E	3P	5	4	E3-P5-4	PA GM 9"	EC1-1'-2", EC2-4"				
E	3S	1	4	E3-S1-4			EC2-4"			
E	3S	3	4	R E3-S3-4R			EC1-1"			
E	3S	3	5	E3-S3-5	PA GM 1/2"					
E	3S	4	2	E3-S4-2		CS HL-2"				
E	3S	4	5	E3-S4-5			EC1-2"			
E	3S	4	6	E3-S4-6			EC1-1", 1"			
E	3S	5	5	E3-S5-5			EC1-14"			
E	3S	5	6	E3-S5-6			EC1-1", 1'-2", 5' No Pk			
E	3S	5	6	N E3-S5-6N			EC1-1', 4"			
E	3S	6	4	E3-S6-4			EC1-3', 1"			
E	3S	6	5	E3-S6-5			EC1-12"			
E	3S	7	2	E3-S7-2		CS HL-6"				
E	3S	7	5	E3-S7-5		CS HL-1"				
E	3S	7	6	E3-S7-6			EC1-1'-2", 3"			
E	3S	7	6	N E3-S7-6N			EC1-1"			
E	3S	9	4	E3-S9-4	Remove to Rebuild Arch					
E	3S	9	5	E3-S9-5			EC1-2"			
E	3S	9	8	E3-S9-8		CS HL-6"	EC1-7"			
E	3S	10	3	E3-S10-3		CS HL AS-14"				
E	3S	10	4	E3-S10-4			EC1-1"			

E3 Schedule of Stone Defects - East Elevations										
ELEVATION ORIENTATION	ELEVATION REFERENCE FLOOR REFERENCE	MASONRY COURSE NUMBER	STONE SEQUENCE NUMBER	PHOTO TAG	GENERAL DEFECT CODES	CRACKED DEFECT CODES	CHIPPED DEFECT CODES	SPALLED DEFECT CODES	EXFOLIATION DEFECT CODES	COMMENTS
E	3S	11	4	E3-S11-4	Remove to Rebuild Arch					
E	3S	11	5	E3-S11-5	Remove to Rebuild Arch					
E	3S	11	5	H E3-S11-5H						
E	3S	12	2	E3-S12-2						
E	3S	12	4	E3-S12-4			CS HL-14"		EC1-2"	
E	3S	12	4	H E3-S12-4H			CS OC-12			
E	3S	12	5	H E3-S12-5H			CS HL-5"			
E	3S	12	6	E3-S12-6			CS HL-16"		EC1-1"	
E	3S	12	6	H E3-S12-6H			CM HL-1', 7"			
E	3S	12	7	E3-S12-7					EC1-1"	
E	3T	1	4	E3-T1-4				EQ-2-48' AI Perimeter		
E	3T	1	7	E3-T1-7			CS HL-1"			
E	3T	2	4	E3-T2-4					EC1-4"	
E	3T	3	4	E3-T3-4					EC1-3"	
E	3T	4	4	E3-T4-4					EC1-1'-2"	
E	3T	4	4	R E3-T4-4R					EC1-2"	
E	3T	8	5	E3-T8-5					EC1-3"	

Grand total: 90

E4 Schedule of Stone Defects - East Elevations										
ELEVATION ORIENTATION	ELEVATION REFERENCE FLOOR REFERENCE	MASONRY COURSE NUMBER	STONE SEQUENCE NUMBER	PHOTO TAG	GENERAL DEFECT CODES	CRACKED DEFECT CODES	CHIPPED DEFECT CODES	SPALLED DEFECT CODES	EXFOLIATION DEFECT CODES	COMMENTS
E	4P	1	7	E4-P1-7						EC1 PP-8", EC1-3"
E	4P	1	11	E4-P1-11						SP2 SL-12 sq in
E	4P	2	11	E4-P2-11						EC1-3"
E	4P	2	12	E4-P2-12			CM HL 1'-2", 2"			
E	4P	3	1	E4-P3-1						EC1-1"
E	4P	3	3	E4-P3-3						EC1-3"
E	4P	3	5	E4-P3-5						EC2-1 sq in
E	4P	3	6	E4-P3-6						EC2-3"
E	4P	3	10	E4-P3-10						EC1-1"
E	4P	3	11	E4-P3-11						EC1-1"
E	4P	3	12	E4-P3-12						EC1-2"
E	4P	4	3	E4-P4-3		FH-Metal Cap				
E	4P	4	4	E4-P4-4		FH-Metal Cap				EC2-2"
E	4P	4	5	E4-P4-5		FH-Metal Cap				
E	4P	4	6	E4-P4-6		FH-Metal Cap				CS HL-6"
E	4P	4	7	E4-P4-7		FH-Metal Cap				EC2 PP-10"
E	4P	4	8	E4-P4-8		FH-Metal Cap				
E	4P	4	9	E4-P4-9		FH-Metal Cap				
E	4P	4	10	E4-P4-10		FH-Metal Cap				
E	4P	4	11	E4-P4-11		FH-Metal Cap				EC1-2"
E	4P	4	12	E4-P4-12		FH-Metal Cap				
E	4P	4	13	E4-P4-13		FH-Metal Cap				
E	4P	5	1	E4-P5-1	PA GM 1" Joint cut wide 14"					
E	4S	3	2	E4-S3-2		FH-Metal Flashing				EC2-2"
E	4S	3	3	E4-S3-3		FH-Metal Flashing				
E	4S	5	9	N E4-S5-9N						CS HL-1"
E	4S	10	2	E4-S10-2						EC1-1'-2", 3"
E	4T	3	1	E4-T3-1						EC1-2', 3"
E	4T	7	7	E4-T7-7						EC2-6"
E	4T	8	7	E4-T8-7						EC1-3"
E	4T	8	12	E4-T8-12						EC1-10"

Grand total: 31

MSR 710 South 2nd Street, 8th Floor
Wauwatosa, Wisconsin 53090-1380
Architectural Interiors and Urban Design
www.msrblog.com

Ken Saki Design, Inc.
360 South Parkview Dr
Madison, WI 53713
608.251.3800 W

KWW
1800 Darling Way, Suite 200
Madison, WI 53713
608.222.6600

MEP Engineers
MEP Associates
590 Blue Center Road, Suite 175
Madison, WI 53713
608.275.9122 W

Lighting Designer
Gallina Design
1020 County Center Rd #1020
Madison, WI 53713
608.981.1838 W

Preparation Architect
Charles Quagliana, AIA
1600 University Ave.
Madison, WI 53706
608.262.8100 W

Building Envelope Consultant
InSite Consulting Architects
P.O. Box 1000, Suite 200
Madison, WI 53703
608.262.8100 W

Fire & Smoke Solutions
Summit Fire Consulting
1000 University Ave., 4th
St. Paul, MN 55103
651.225.9300 W

Acoustical Consultant
KRA
1600 Chicago Avenue South, Suite 200
Wauwatosa, WI 53090
414.224.1100 W

Madison
CIVIL ENGINEERS
1600 County Center, Suite 201
Madison, WI 53703

Madison Municipal Building

215 Martin Luther King, Jr. Blvd
Madison, WI 53703

BID NO.	E3-E4	BID TITLE	E3 & E4 Stone Masonry Defect Schedules	DATE	12/15/2015
PROJECT NO.	BID ISSUE				
ISSUE NO.	BID ISSUE				

E3 & E4 Stone Masonry Defect Schedules

N1 Schedule of Stone Defects - North Elevations										
ELEVATION ORIENTATION	FLOOR REFERENCE	MASONRY COURSE NUMBER	STONE SEQUENCE NUMBER	PHOTO TAG	GENERAL DEFECT CODES	CRACKED DEFECT CODES	CHIPPED DEFECT CODES	SPALLED DEFECT CODES	EXFOLIATION DEFECT CODES	COMMENTS
N	1	B	1	E	N1-B2-1E	Noted on N3 Elev				
N	1	B	2	E	N1-B2-1		EC2-4"			
N	1	B	2	E	N1-B2-2	CS HL-8"				
N	1	B	2	E	N1-B2-4	CM HL 5" OC 10"			E1-12 sq in	
N	1	B	2	E	N1-B2-6	CM OC 10" HL 6"				
N	1	B	2	E	N1-B2-7	CS HL-10"				
N	1	B	2	E	N1-B2-9	CM HL&OC-50"total	EC2-24 sq in			
N	1	B	2	E	N1-B2-9W	CM HL 20" total	EC2-10 sq in, 4" 2"			
N	1	B	5	E	N1-B3-5				E1-48 sq in	
N	1	B	5	E	N1-B3-6		EC1-2"		E1-8 sq in	
N	1	B	5	E	N1-B3-7				E1-70%	
N	1	B	5	E	N1-B3-8	PA 20"	EC1-2"		E1-20%	
N	1	B	9	E	N1-B3-9	PA 12", 12", Hole PP 20 sq in	CS OC-17"			
N	1	B	10	E	N1-B3-10	PA 8"			E1-32 sq in	
N	1	B	10	W	N1-B3-10W		EC1-2", 10"			E1-120 sq in
N	1	B	11	E	N1-B4-1E		EC2-30-2"			
N	1	B	11	E	N1-B4-1		EC1 PP-10", EC1-2"			
N	1	B	4	2	N1-B4-2		EC1-24"			
N	1	B	4	4	N1-B4-4		EC1-6"			
N	1	B	4	5	N1-B4-5	CM HL 6", 3"				
N	1	B	4	6	N1-B4-6		EC1-2"			
N	1	B	4	8	N1-B4-8	PA 36"				
N	1	B	4	9	N1-B4-9	PA 25", 2"				
N	1	B	4	10	N1-B4-10	PA 6", 6"				
N	1	B	4	10	N1-B4-10W		EC1-1", EC2-3"			
N	1	B	5	3	N1-B5-3		EC1-2", 3"			
N	1	B	5	5	N1-B5-5	CS HL-4"				
N	1	B	5	5	N1-B5-5SL	CS HL-16"				
N	1	B	5	8	N1-B5-8	CM HL 4", SL6"				
N	1	B	5	8	N1-B5-8SL	CS HL-20"				
N	1	B	5	11	N1-B5-11	CS HL-6"				
N	1	B	6	2	N1-B6-2	CS HL-3"				
N	1	B	6	3	N1-B6-3L		EC2 PP-3"			
N	1	B	6	4	N1-B6-4		EC1 PP-2"			SP2-20 sq in
N	1	B	6	4	R N1-B6-4R					
N	1	B	6	7	R N1-B6-7R	CS OC SL-3"				
N	1	B	6	10	W N1-B6-10W	CS HL-2"				
N	1	B	7	9	N1-B7-9		EC1 190-9"			
N	1	B	7	2	N1-B8-2		EC2-3"			
N	1	B	8	3	N1-B8-3	CS HL-3"				
N	1	B	8	8	N1-B8-8	CM HL 6", 2"				
N	1	B	10	2	N1-B10-2	CS HL-2"	EC1-4"			
N	1	B	10	3	N1-B10-3		EC1-3"			
N	1	B	10	4	N1-B10-4	CS HL-10"	EC1 PP-3"			
N	1	B	10	6	N1-B10-6	CS HL-8"				
N	1	B	10	8	N1-B10-8	CS HL-3"				
N	1	F	1	1	N1-F1-1	CM HL 3", 2", 1"	EC1-2"			
N	1	F	1	2	N1-F1-2	CS HL-3"				
N	1	F	1	3	N1-F1-3	CS HL-1"				
N	1	F	1	4	N1-F1-4	PA GM 1"				
N	1	F	1	5	N1-F1-5	CM HL 2", 2"				
N	1	F	1	6	N1-F1-6	PA GM 1"				
N	1	F	1	7	N1-F1-7	CS HL-2"				
N	1	F	1	10	W N1-F1-10W		EC1-4"			
N	1	F	2	2	N1-F2-2	CS HL-8"				
N	1	F	2	4	N1-F2-4	CS OC PP-17"	EC1 PP-2"			
N	1	F	2	6	N1-F2-6	CS HL-2"				
N	1	F	2	8	N1-F2-8	CS OC PP-17"				
N	1	F	3	5	N1-F3-5	CS HL-3"	EC1-1"			
N	1	F	3	8	N1-F3-8	CS HL-1"				
N	1	F	4	2	N1-F4-2	PA GM 1"	CS HL-3"			
N	1	F	4	4	N1-F4-4	Dutchman Joint Added				
N	1	F	4	5	N1-F4-5	PA GM 1"				
N	1	F	4	7	R N1-F4-7R				SP2-50 sq in	
N	1	F	5	1	N1-F5-1	CS HL-4"	EC1-1", 1"			
N	1	F	7	2	N1-F7-2	CM HL 1", 1", 2", 2"				

N1 Schedule of Stone Defects - North Elevations										
ELEVATION ORIENTATION	FLOOR REFERENCE	MASONRY COURSE NUMBER	STONE SEQUENCE NUMBER	PHOTO TAG	GENERAL DEFECT CODES	CRACKED DEFECT CODES	CHIPPED DEFECT CODES	SPALLED DEFECT CODES	EXFOLIATION DEFECT CODES	COMMENTS
N	1	F	9	1	N1-F9-1		CM HL 4", 2", 2", 2"		EC1-1"	
N	1	F	10	3	N1-F10-3		CS HL-3"			
N	1	F	12	9	N1-F12-9				EC2 PP-2"	
N	1	F	13	5	N1-F13-5				EC2-1", 2", EC1-1"	
N	1	F	13	8	N1-F13-8				EC2-3"	
N	1	F	13	9	N1-F13-9				EC2-3"	
N	1	F	13	10	N1-F13-10				EC1-2"	
N	1	P	1	10	N1-P1-10				EC1-1"	
N	1	P	2	4	N1-P2-4					E2 30 sq in
N	1	P	2	10	N1-P2-10	CM OP-12"			EC2-3"	
N	1	P	2	10	W N1-P2-10W				EC1-3"	
N	1	P	3	1	N1-P3-1				EC2 SL-4", Top	
N	1	P	3	2	N1-P3-2		CS HL-4"		EC1 PP-2"	
N	1	P	3	6	N1-P3-6				EC1-2"	
N	1	P	3	7	N1-P3-7	PA GM 1", Top				
N	1	P	4	1	E N1-P4-1E				EC1-1", EC2-3"	
N	1	P	4	2	N1-P4-2				EC2-8"	
N	1	P	4	3	N1-P4-3	PA GM 2"				
N	1	P	4	4	N1-P4-4	PA GM 1", 3"				
N	1	P	4	5	N1-P4-5	PA GM 3"				
N	1	P	4	8	N1-P4-8	PA GM 1"				
N	1	P	6	3	N1-P6-3				EC1-2"	
N	1	S	1	3	N1-S1-3	PA GM 2"				
N	1	S	1	4	N1-S1-4	PA GM 2", 2"				
N	1	S	1	5	L N1-S1-5L				EC2-6"	
N	1	S	1	5	N1-S1-5	PA GM 2"			EC1-2", EC1 PP-1"	
N	1	S	1	7	N1-S1-7	PA GM 1"				
N	1	S	1	10	N1-S1-10		CM HL 6", 4"			
N	1	S	1	10	W N1-S1-10W		CS HL-8"		EC1-10"	
N	1	S	2	1	E N1-S2-1E					
N	1	S	3	2	N1-S3-2		CM HL 2", 820"			
N	1	S	3	6	R N1-S3-6R				EC1-1"	
N	1	S	3	6	N1-S3-6				EC1-2", 2", 2"	
N	1	S	3	7	N1-S3-7				EC1-2", 2", 1"	
N	1	S	4	2	N1-S4-2		CS HL-17"		EC1-4"	
N	1	S	4	5	N1-S4-5				EC1-2"	
N	1	S	4	7	N1-S4-7		CS HL-3"		EC2-8"	
N	1	S	4	8	W N1-S4-8W				EC1-1", 6"	
N	1	S	5	2	N1-S5-2		CS HL-3"			
N	1	S	5	3	N1-S5-3					
N	1	S	6	1	E N1-S6-1E				EC1-4"	
N	1	S	6	1	N1-S6-1				EC1-3", 4"	
N	1	S	6	3	N1-S6-3				EC1-1"	
N	1	S	6	8	N1-S6-8				EC1-1", 4"	
N	1	S	7	6	N1-S7-6				EC1-4"	
N	1	S	8	2	N1-S8-2		CM HL 2", 817"			
N	1	S	8	5	N1-S8-5				EC1-4"	
N	1	S	8	10	W N1-S8-10W		CS HL SL-3"		EC1-1"	
N	1	S	9	10	N1-S9-10				EC1-1"	
N	1	S	9	7	N1-S9-7				EC1-1"	
N	1	S	9	9	N1-S9-9				EC1-1"	
N	1	S	10	5	N1-S10-5				EC1 PP-1"	
N	1	S	10	6	H N1-S10-6H				EC1-1"	
N	1	S	11	2	N1-S11-2		EC1-S11-2"		EC1-1", 2"	
N	1	S	11	5	N1-S11-5				EC1 PP-1"	
N	1	S	11	7	N1-S11-7				EC1 PP-3"	
N	1	S	12	4	N1-S12-4		EC1-4"		EC1-4"	
N	1	S	12	7	N1-S12-7				EC2 PP-2"	
N	1	S	12	8	N1-S12-8				EC2-10"	
N	1	T	1	2	N1-T1-2				EC1-1", EC2-2"	
N	1	T	1	5	N1-T1-5				EC1-3", EC2-24"	
N	1	T	1	6	N1-T1-6	CS HL-22"			EC1-1", 2"	
N	1	T	1	7	N1-T1-7				EC1-1", 2"	
N	1	T	2	2	N1-T2-2				EC1-2"	
N	1	T	2	5	N1-T2-5				EC1-1", 8", 12"	
N	1	T	2	6	N1-T2-6				EC1-1"	
N	1	T	3	4	N1-T3-4				EC1-2"	
N	1	T	4	1	E N1-T4-1E				EC1-8"	
N	1	T	4	1	N1-T4-1				EC1-3", 5"	
N	1	T	6	1	E N1-T6-1E				EC1-2"	
N	1	T	6	6	N1-T6-6				EC1-1"	
N	1	T	8	2	N1-T8-2				EC1-2"	
N	1	T	8	3	N1-T8-3				EC1-2"	
N	1	T	8	8	N1-T8-8				EC2-2"	
N	1	T	8	9	N1-T8-9				EC1-2"	

Grand total: 143

MSR 710 South 2nd Street, 8th Floor
 Milwaukee, Wisconsin 53201-3380
 Phone: 414.224.1400
 Fax: 414.224.1401
 www.msrinc.com

Ken Saki Design, Inc
 360 South Parkview Dr
 Milwaukee, WI 53219
 414.221.3800

KJWW
 1800 Center Hwy, Suite
 200
 Wauwatosa, WI 53226
 414.221.8800

MEP Engineers
MEP Associates
 880 Blue Center Road, Suite 175
 Wauwatosa, WI 53226
 414.221.9122

Lighting Designer
Gallina Design
 1800 Center Hwy, Suite
 200
 Wauwatosa, WI 53226
 414.221.8800

Preparation Architect
Charles Quagliana, AIA
 1600 Lincoln Ave.
 Milwaukee, WI 53233
 414.224.1400

Building Envelope Consultant
InSite Consulting Architects
 1111 North Central, Suite 200
 Milwaukee, WI 53233
 414.224.1400

Fire & Code Consultant
Summit Fire Consulting
 1000 Lincoln Ave., 4th
 St. Paul, MN 55102
 612.291.9300

Acoustical Consultant
KRA
 1600 Center Avenue South, Suite 200
 Wauwatosa, WI 53226
 414.221.8800

Architect
CIVIL ENGINEERS
 1600 Center Avenue South, Suite 201
 Wauwatosa, WI 53226
 414.221.8800

Madison Municipal Building
 215 Martin Luther King, Jr. Blvd
 Madison, WI 53703

7989
BID ISSUE

N1 Stone Masonry Defect Schedules

N3 Schedule of Stone Defects - North Elevations										
ELEVATION ORIENTATION	FLOOR REFERENCE	MASONRY COURSE NUMBER	STONE SEQUENCE NUMBER	PHOTO TAG	GENERAL DEFECT CODES	CRACKED DEFECT CODES	CHIPPED DEFECT CODES	SPALLED DEFECT CODES	EXFOLIATION DEFECT CODES	COMMENTS
N 3 B 9 1		N3-B9-1					EC1-2,4'			
N 3 B 9 2		N3-B9-2			CS HL-5"					
N 3 B 9 3		N3-B9-3			CM HL-80"					
N 3 B 9 7		N3-B9-7			CM HL-5'12"					
N 3 B 9 10		N3-B9-10			CS DP SL-10"					
N 3 B 10 1		N3-B10-1							E1-188 sq in	
N 3 B 10 3		N3-B10-3			CS HL-4"				E1-10%	
N 3 B 10 4		N3-B10-4			CS HL-8"					
N 3 B 10 5		N3-B10-5			CS HL-6"	EC1-4,4'				
N 3 B 10 11		N3-B10-11								
N 3 B 11 2		N3-B11-2					SP1-3 sq in			
N 3 B 11 3		N3-B11-3					SP1-2 sq in, 2 sq in			
N 3 B 11 5		N3-B11-5			CS HL SL-3"		SP1-3 sq in, 6 sq in			
N 3 B 11 8		N3-B11-8					SP1-4 sq in			
N 3 B 11 9		N3-B11-9					SP1-6 sq in			
N 3 B 11 10		N3-B11-10			CS HL SL-3"					
N 3 F 1 1 E		N3-F1-1E							EC1-3"	
N 3 F 1 1 W		N3-F1-1W							EC1-1"	
N 3 F 1 2		N3-F1-2			CS HL SL-8"				EC2-3"	SP1-1 sq in, SP2-3sq in
N 3 F 1 4		N3-F1-4					EC1-3"			
N 3 F 1 8		N3-F1-8			PA-8"					
N 3 F 1 9		N3-F1-9			CM HL 1'3" CS HL SL-3"					
N 3 F 2 1		N3-F2-1			CS HL-2"					
N 3 F 2 4		N3-F2-4			CM HL-2'5"					
N 3 F 2 5		N3-F2-5			CS HL-3"					
N 3 F 2 6		N3-F2-6			CS HL-9"					
N 3 F 2 7		N3-F2-7			CS HL-1"					
N 3 F 2 10		N3-F2-10		FH1-2ea	CM HL-6'11"	EC1-1"				
N 3 F 3 1 E		N3-F3-1E				EC1-2"				
N 3 F 3 1 W		N3-F3-1W				EC1-6"				
N 3 F 3 2		N3-F3-2		FH1-1/4' 1/4"		EC1-6"				
N 3 F 3 3		N3-F3-3				EC2-6 sq in				
N 3 F 3 4		N3-F3-4			CM HL-2'5"					
N 3 F 6 9		N3-F6-9		FH2-4ea			SP2-8sq in total			
N 3 F 7 2		N3-F7-2			CS HL-3"					
N 3 F 7 8		N3-F7-8				EC1-4"				
N 3 F 7 10		N3-F7-10		FH2-1ea 1/4' dia	CS HL-2"					
N 3 F 7 10 W		N3-F7-10W								
N 3 F 8 1 E		N3-F8-1E				EC1-1"				
N 3 F 8 7 R		N3-F8-7R				EC2-8"				
N 3 F 8 9		N3-F8-9			CS HL-9"					
N 3 F 9 4		N3-F9-4				EC1-2"				
N 3 F 9 6 L		N3-F9-6L					SP2-1 sq in			
N 3 F 9 9		N3-F9-9			CS HL-3"					
N 3 F 10 3		N3-F10-3			CS HL SL-4L	EC1-2"				
N 3 F 10 4 L		N3-F10-4L								
N 3 F 10 7 R		N3-F10-7R					SP2-30sq in			
N 3 F 11 6		N3-F11-6				EC1-8P-2"				
N 3 F 11 6 N		N3-F11-6N				EC2-2,2"				
N 3 F 12 9		N3-F12-9			CS HL-6"					
N 3 F 13 1 E		N3-F13-1E			CS HL-3"					
N 3 F 13 2		N3-F13-2			CM HL-3' 8/4" Top	EC1-1", 1'2" Top				

N3 Schedule of Stone Defects - North Elevations										
ELEVATION ORIENTATION	FLOOR REFERENCE	MASONRY COURSE NUMBER	STONE SEQUENCE NUMBER	PHOTO TAG	GENERAL DEFECT CODES	CRACKED DEFECT CODES	CHIPPED DEFECT CODES	SPALLED DEFECT CODES	EXFOLIATION DEFECT CODES	COMMENTS
N 3 F 13 5 S		N3-F13-5S				CM HL&OP SL-40"				
N 3 F 13 6 L		N3-F13-6L								
N 3 P 2 3		N3-P2-3				CS HL-3"	EC1-2"		SP2-8sq in	
N 3 P 2 6		N3-P2-6				CM HL 1'1"				
N 3 P 2 10		N3-P2-10				CS HL SL-12"/CS OC-5"				
N 3 P 3 4		N3-P3-4					EC1-4"			
N 3 P 4 3		N3-P4-3					EC1-1"			
N 3 P 4 4		N3-P4-4					EC1-4"			
N 3 P 4 10 W		N3-P4-10W					EC1-1"			
N 3 P 5 2		N3-P5-2					EC1-3'2"			
N 3 P 5 8		N3-P5-8					EC1-3'2"			
N 3 P 5 10		N3-P5-10				CM HL-5"	EC1-PP-4"			
N 3 P 6 1		N3-P6-1					EC1-1"			
N 3 P 6 9		N3-P6-9					EC1-12"			
N 3 S 1 2		N3-S1-2			PA GM-2' 2"					
N 3 S 1 5		N3-S1-5					EC1-3"			
N 3 S 1 6 R		N3-S1-6R					EC2-3"			
N 3 S 1 6		N3-S1-6			PA GM-2"					
N 3 S 2 4		N3-S2-4					EC1-8"			
N 3 S 2 5		N3-S2-5				CM HL 3'3"				
N 3 S 2 7		N3-S2-7				CM HL 2'2"				
N 3 S 3 4		N3-S3-4				CS HL-2"				
N 3 S 3 7		N3-S3-7				CM HL 5'1"				
N 3 S 4 1		N3-S4-1					EC1-2'8"			
N 3 S 4 4		N3-S4-4					EC1-1"			
N 3 S 4 5 R		N3-S4-5R				CS HL-2"				
N 3 S 4 5		N3-S4-5					EC1-4"			
N 3 S 4 7		N3-S4-7					EC1-1", No Plot			
N 3 S 4 8		N3-S4-8					EC1-10"			
N 3 S 5 7		N3-S5-7					EC1-3"			
N 3 S 6 1		N3-S6-1					EC1-10"			
N 3 S 6 1 E		N3-S6-1E				CS HL-4"				
N 3 S 6 4		N3-S6-4					EC1-2'2"			
N 3 S 6 5 R		N3-S6-5R				CS HL-3"				
N 3 S 7 7		N3-S7-7				CS HL-8"				
N 3 S 9 7		N3-S9-7					EC1-1"			
N 3 S 9 8		N3-S9-8					EC1-2"			
N 3 S 10 1 E		N3-S10-1E					EC1-7"			
N 3 S 10 9		N3-S10-9						SP2-30 sq in, Anchor		
N 3 S 11 9		N3-S11-9					EC1-1'2"			
N 3 S 12 1 E		N3-S12-1E					EC1-6"			
N 3 S 12 3		N3-S12-3					EC1-5"			
N 3 S 12 5 H		N3-S12-5H					EC2-8"			
N 3 S 12 9		N3-S12-9					EC1-2'5"			
N 3 T 1 6		N3-T1-6					EC1-PP-1"			E2 30 sq in
N 3 T 2 1		N3-T2-1					EC1-2"			
N 3 T 2 4 L		N3-T2-4L					EC1-8"			
N 3 T 2 5		N3-T2-5			PA Rope Marks 40" total	EC1-3'2", CE2-6"				
N 3 T 2 6		N3-T2-6					EC1-1"			
N 3 T 4 6		N3-T4-6					EC2-3"			
N 3 T 6 8		N3-T6-8					EC1-1"			
N 3 T 7 5		N3-T7-5						SP2-30 sq in, Anchor		
N 3 T 7 10		N3-T7-10					EC1-1'2"			

Grand total: 107

MSR 710 South 2nd Street, 8th Floor
 Milwaukee, Wisconsin 53201-3380
 Phone: 414.224.1100
 Fax: 414.224.1101
 www.msrinc.com

Architectural
 Interiors and
 Urban Design

Ken Saki Design, Inc.
 300 South Parkview Dr
 Milwaukee, WI 53219
 414.251.3800 W

Structural Engineering Technology, A/C
 KWW
 1800 Century Way, Suite
 200
 Wauwatosa, WI 53226
 414.222.6600 W

MEP Engineers
 MEP Associates
 800 Blue Canyon Road, Suite 175
 Wauwatosa, WI 53226
 414.274.9332 W

Lighting Designer
 Gallina Design
 2020 County
 Greenway, WI 53222
 414.261.1828 W

Preservation Architect
 Charles Quagliana, AIA
 1600 Washington Ave
 Milwaukee, WI 53233
 Milwaukee, WI 532

Building Envelope Consultant
 InSite Consulting Architects
 1111 North Central Ave., 200
 Milwaukee, WI 53233
 414.224.6000 W

Fire & Code Consultants
 Summit Fire Consulting
 1000 W. Wisconsin Ave., 2nd
 St. Paul, MN 55102
 612.291.9300 W

Architectural Consultant
 KRA
 2000 Chicago Avenue South, Suite 200
 Wauwatosa, WI 53226
 414.224.1100 W

Architectural
 CIVIL ENGINEERS
 901 East Center, Suite 201
 Milwaukee, WI 53212

Madison Municipal
 Building
 215 Martin Luther King, Jr. Blvd
 Madison, WI 53703

7839
 BID ISSUE

N3 Stone
 Masonry Defect
 Schedules

ELEVATION ORIENTATION	FLOOR REFERENCE	INSURANCE COURSE NUMBER	PHOTO TAG	GENERAL DEFECT CODES	CRACKED DEFECT CODES	CHIPPED DEFECT CODES	SPALLED DEFECT CODES	EXFOLIATION DEFECT CODES	COMM ENTS
S2 B 5 19	S2 B5-9								
S2 B 5 13	S2 B5-13			CS HL-3"		EC1-6"			
S2 B 5 19	S2 B5-19			CS HL-5"		EC1-10"			
S2 B 5 21	S2 B5-21			CS HL-3"		EC1-4"			
S2 B 5 20 S	S2 B5-20 S								
S2 B 5 E	S2 B5-ES1						SP2-100%		
S2 B 5 E	S2 B5-ES2			CS OC-6"			SP2-20, 25 sq in		
S2 B 5 S	S2 B5-ES3						SP2-30sq in		
S2 B 5 W	S2 B5-WS 1			CS OC PP-6"		EC2-25 sq in			
S2 B 5 W	S2 B5-WS 2						SP2-70% of stone spalled, 4" deep		
S2 B 5 W	S2 B5-WS 3					EC2-20,16,16 sq in			
S2 B 5 S	S2 B5-3						SP2-20 sq in, 20 sq in-anchored		
S2 B 6 E	S2 B6-6			CS HL SL-12"		EC1-8"			
S2 B 6 18 L	S2 B6-18L			CS HL-1"		EC1-6"			
S2 B 6 21 L	S2 B6-21L					EC1-6"			
S2 B 6 22 R	S2 B6-22R					EC1-12"			
S2 B 6 24 L	S2 B6-24L					EC1-6"			
S2 B 6 25 R	S2 B6-25R					EC1-6"			
S2 B 6 27 L	S2 B6-27L					EC2-2" EC1-2" 6"			
S2 B 6 28	S2 B6-28					EC1-1"			
S2 B 6 28 R	S2 B6-28R					EC1-2"			
S2 B 6 31	S2 B6-30			PA GM-3 sq in		EC1-1" 6"			
S2 B 6 E	S2 B6-ES1					EC2 PP-6"			
S2 B 6 S	S2 B6-ES2					EC2-2" 4" 6"			
S2 B 6 W	S2 B6-WS 1					EC2-3"			
S2 B 7 2	S2 B7-2					EC2-3"			
S2 B 7 4	S2 B7-4					EC1-2"			
S2 B 7 11	S2 B7-11					EC2-3", 3"		E1-40 sq in	
S2 B 7 18	S2 B7-18			CS HL-7"					
S2 B 7 19	S2 B7-19			CS HL-12"				SP1-3 sq in	
S2 B 7 19 L	S2 B7-19L			CS HL-7"					
S2 B 7 E	S2 B7-ES1			CS HL SL-5"					
S2 B 7 E	S2 B7-ES2					EC2-2"			
S2 B 7 S	S2 B7-ES3					EC2-4" 5"			
S2 B 7 W	S2 B7-W					EC1-9"			
S2 B 8 6	S2 B8-6			CS HL SL-17"					
S2 B 8 15	S2 B8-15			CS HL-8"				E1-36 sq in	
S2 B 8 17	S2 B8-17			CS HL-18"					
S2 B 8 19	S2 B8-19			CS OC SL-17"					
S2 B 8 20	S2 B8-20					EC2-2", EC1-2"			
S2 B 8 25	S2 B8-25			CM HL-2" 2"					
S2 B 8 26	S2 B8-26					EC2-3" EC1-2"			
S2 B 8 27 L	S2 B8-27L			CS OC PP-18", CS HL-6"					
S2 B 8 E	S2 B8-ES1					EC1-2", EC2-2", 6.15 sq in			
S2 B 8 W	S2 B8-WS 1			CS HL SL-10"					
S2 B 8 W	S2 B8-WS 2					EC2-4"			
S2 B 9 11	S2 B9-11			CS HL-6"				SP2 SL-45 sq in	
S2 B 9 10	S2 B9-10							E1-40 sq in	
S2 B 9 11	S2 B9-11								
S2 B 9 18	S2 B9-18			FH1-1ea 1/4" dia		EC2-4" 6"		E1-12 sq in	
S2 B 9 19	S2 B9-19					EC1-2" 2"			
S2 B 9 E	S2 B9-ES1			CS OC PP-18"					
S2 B 9 E	S2 B9-ES2					EC2 PP-8 sq in			
S2 B 9 W	S2 B9-WS 1			CS HL-12"					
S2 B 9 W	S2 B9-WS 2					EC1 PP-9"			
S2 B 9 W	S2 B9-WS 3					EC2-2" 6"			
S2 B 9 W	S2 B9-WS 4					EC2-2" 2", 3" 6"			
S2 B 10 4	S2 B10-4			FH1-1ea 1/4" dia					
S2 B 10 13	S2 B10-13					EC1-1" 3"			
S2 B 10 13 H	S2 B10-13 H							E1-75%	
S2 B 10 23	S2 B10-23			Hole PP 3/8 in, FH2-1ea 1/4" dia		CS HL-4"			
S2 B 10 25	S2 B10-25					EC1-8"			
S2 B 10 28	S2 B10-28					EC1-6"			
S2 B 10 ES	S2 B10-ES			CS OP PP-18"		EC2 PP-6", EC2-3"			
S2 B 10 S1	S2 B10-S1			Stone sample take-P2		CM HL 8", 17"		EC2 PP-12, 16 sq in, EC2-18 sq in.	
S2 B 10 W	S2 B10-W					EC2, PP-4"			

ELEVATION ORIENTATION	FLOOR REFERENCE	INSURANCE COURSE NUMBER	PHOTO TAG	GENERAL DEFECT CODES	CRACKED DEFECT CODES	CHIPPED DEFECT CODES	SPALLED DEFECT CODES	EXFOLIATION DEFECT CODES	COMM ENTS
S2 B 10 W	S2 B10-W			CM HL-4", 17"					
S2 B 11 13	S2 B11-13					EC1-2"			
S2 B 11 17	S2 B11-17					EC2-1"			
S2 B 11 18	S2 B11-18						SP2-100 sq in, 2" Depth		
S2 B 11 18 2	S2 B11.18.2			Worn Coating					
S2 B 11 18 4	S2 B11.18.4			Worn Coating					
S2 B 11 18 6	S2 B11.18.6			Worn Coating					
S2 B 11 19	S2 B11-19						SP2-30 sq in 3/4" Deep		
S2 B 11 21	S2 B11-21					EC2-5"			
S2 B 11 33	S2 B11-33					EC1 PP-2"			
S2 B 11 36	S2 B11-36					EC1-1"			
S2 F 1 1	S2 F1-1			PA GM 2"		CS HL-1"			
S2 F 1 2	S2 F1-2			PA GM 2"					
S2 F 1 3	S2 F1-3			PA GM 1"					
S2 F 1 17	S2 F1-17			PA GM 2"					
S2 F 1 18	S2 F1-18					CS OC-10"		E1-25 sq in	
S2 F 1 19	S2 F1-19					EC1 SL-1"			
S2 F 1 19 L	S2 F1-19L							E1-120 sq in	
S2 F 1 20	S2 F1-20							E1-8 sq in	
S2 F 1 20 R	S2 F1-20R							E1-280 sq in	
S2 F 1 21	S2 F1-21							E1-280 sq in	
S2 F 1 22	S2 F1-22					EC2-2" 4" 12 sq in		E1-100 sq in	
S2 F 1 22 L	S2 F1-22L					EC2-4"		E1-280 sq in	
S2 F 1 23	S2 F1-23					EC1-2"		E1-8"	
S2 F 1 23 R	S2 F1-23R					EC1-1" 6"		E1-80%	
S2 F 1 24	S2 F1-24					EC1-90%		E1-90%	
S2 F 1 25	S2 F1-25					EC2 PP-6"		CS HL-1"	
S2 F 1 25 L	S2 F1-25L					EC1-2"		E1-100 sq in	
S2 F 1 26	S2 F1-26					EC2-2" 2"		E1-110 sq in	
S2 F 1 26 R	S2 F1-26R					EC1 SL-1"		E2 sq in	
S2 F 1 27	S2 F1-27			PA GM 1"		EC1-2"			
S2 F 1 28	S2 F1-28			PA GM 1"		EC1-1"			
S2 F 1 29	S2 F1-29					EC1-2"			
S2 F 1 37	S2 F1-37			PA GM 1"					
S2 F 1 39	S2 F1-39					EC1-2"			
S2 F 2 2	S2 F2-2					EC1-1", 1"			
S2 F 2 5	S2 F2-5					EC1-1"			
S2 F 2 9	S2 F2-9					EC1 PP-1"			
S2 F 2 10	S2 F2-10					EC1 PP-3"			
S2 F 2 19	S2 F2-19							SP2-40 sq in	
S2 F 2 20 L	S2 F2-20L							E1 Light-40 sq in	
S2 F 2 21 R	S2 F2-21R							E1 Light-100 sq in	
S2 F 2 23	S2 F2-23					EC1 PP-2"		E1-18 sq in	
S2 F 2 23 L	S2 F2-23L							E1 Light-140 sq in	
S2 F 2 25	S2 F2-25							E1 Light-60 sq in	
S2 F 2 26	S2 F2-26			PA GM 2", 2"		EC1-1"			
S2 F 2 30	S2 F2-30					EC1-2"			
S2 F 3 6	S2 F3-6					EC1-12", EC1 SL-2"			
S2 F 3 12	S2 F3-12			CS HL-3"		EC1 PP-1"			
S2 F 3 15	S2 F3-15					EC1-2"			
S2 F 3 17	S2 F3-17					EC1 PP-2"			
S2 F 3 19	S2 F3-19			CS HL-6"					
S2 F 3 24	S2 F3-24			CS HL-2"					
S2 F 3 28	S2 F3-28					EC1-1"			
S2 F 3 28	S2 F3-28			PA GM 1"		CM HL-6@2"			
S2 F 4 3	S2 F4-3					EC1-2"			
S2 F 4 4	S2 F4-4			PA GM 1"					
S2 F 4 6 L	S2 F4-6L					EC1-6"			
S2 F 4 13	S2 F4-13					EC1-1"			
S2 F 4 14	S2 F4-14					EC1-1"			
S2 F 4 15	S2 F4-15					EC1-1"			
S2 F 4 20	S2 F4-20					EC1-2"			
S2 F 4 21	S2 F4-21					EC1-2"			
S2 F 4 24	S2 F4-24					EC1-4"			
S2 F 4 27	S2 F4-27			PA GM 1"		EC1-2"			
S2 F 4 29 R	S2 F4-29R					EC1-6"			
S2 F 4 31	S2 F4-31					EC1-2"			
S2 F 5 20	S2 F5-20					EC1 PP-1"			
S2 F 5 25	S2 F5-25					FH1 Sign			
S2 F 5 26	S2 F5-26					EC2-3"			
S2 F 5 40 R	S2 F5-40R					CM HL-4"			
S2 F 6 13 R	S2 F6-13R					EC1-2"			
S2 F 6 21 R	S2 F6-21R					EC2-10"			
S2 F 6 29	S2 F6-29					CM HL-2"			
S2 F 7 2	S2 F7-2					CM HL-3"			
S2 F 7 5 R	S2 F7-5R					EC2-20 sq in			
S2 F 7 13 L	S2 F7-13L					EC1-3"			

ELEVATION ORIENTATION	FLOOR REFERENCE	INSURANCE COURSE NUMBER	PHOTO TAG	GENERAL DEFECT CODES	CRACKED DEFECT CODES	CHIPPED DEFECT CODES	SPALLED DEFECT CODES	EXFOLIATION DEFECT CODES	COMM ENTS
S2 F 7 17 R	S2 F7-17R						CS HL-14" Nat Defect		
S2 F 7 19	S2 F7-19.1							EC1 PP-1"	
S2 F 7 20	S2 F7-20			FH1-1ea 1/4" dia					
S2 F 7 21	S2 F7-21			FH1 Sign					
S2 F 7 24	S2 F7-24							EC1-1"	
S2 F 7 25 R	S2 F7-25R							EC2-6"	
S2 F 7 27 L	S2 F7-27L							EC2-3"	
S2 F 7 R	S2 F7-R							EC2-3"	
S2 F 8 10	S2 F8-10							EC1-2"	
S2 F 8 11	S2 F8-11							EC1-1"	
S2 F 8 11 R	S2 F8-11R							SP1-16 sq in	
S2 F 8 12 L	S2 F8-12L							EC2-4"	
S2 F 8 16	S2 F8-16.2							EC1 PP-4"	
S2 F 8 17	S2 F8-17			FH1 Sign					
S2 F 8 18	S2 F8-18			FH1 Sign					
S2 F 8 18	S2 F8-18.1							EC1-2"	
S2 F 8 18	S2 F								

S2 UPPER Schedule of Stone Defects - South Elevations										
ELEVATION REFERENCE	FLOOR REFERENCE	MASONRY COURSE NUMBER	STONE COURSE NUMBER	PHOTO TAG	GENERAL DEFECT CODES	CRACKED DEFECT CODES	CHIPPED DEFECT CODES	SPALLED DEFECT CODES	EXFOLIATION DEFECT CODES	COMMENTS
S2 P 1 1		S2-P1-1					EC2 PP-8"			
S2 P 1 4		S2-P1-4			CS HL-3"		EC1 PP-2"			
S2 P 1 13		S2-P1-13			CS HL-6"		EC1-2"			
S2 P 1 34		S2-P1-34								
S2 P 1 51		S2-P1-51			PA GM-2"		CM HL-6"			
S2 P 1 34		S2-P1-34					EC1-1"			
S2 P 1 58		S2-P1-58			PA GM 1"		CS HL-6"			
S2 P 1 47		S2-P1-47					EC1-1"			
S2 P 1 50		S2-P1-50					EC1-1"			
S2 P 2 11		S2-P2-11			CS OC-12					
S2 P 2 11 R		S2-P2-11RT			CS HL-1"		EC2-8 sq in			
S2 P 2 7		S2-P2-7					EC1-12"			
S2 P 2 28		S2-P2-28					EC2-2,4"			
S2 P 3 1 R		S2-P3-1RT					CS HL-1"			
S2 P 3 10		S2-P3-10			CS HL-20" Top					
S2 P 3 22		S2-P3-22					EC1 PP-2"			
S2 P 3 25		S2-P3-25					EC2-3"			
S2 P 3 27		S2-P3-27					EC1-1"			
S2 P 3 28		S2-P3-28					EC1-2" 1/2" Under			
S2 P 3 29		S2-P3-29					EC2-12" Under			
S2 P 3 33		S2-P3-33					EC2-12" Under			
S2 P 3 34		S2-P3-34					EC2-18" Under		E2 20 sq in	
S2 P 3 37		S2-P3-37					EC1 PP-4"			
S2 P 4 11		S2-P4-11			CS HL-6" 24" one crack top and face					
S2 P 4 6		S2-P4-6					EC1-8"			
S2 P 4 7		S2-P4-7					EC1-8"			
S2 P 4 17		S2-P4-17					EC2-9"			
S2 P 4 18		S2-P4-18					EC1-12"			
S2 P 4 19		S2-P4-19			CS HL-3"		EC1-3"			
S2 P 4 22		S2-P4-22					EC1-2"			
S2 P 4 23		S2-P4-23					EC2-9"			
S2 P 4 25		S2-P4-25					EC1-3"			
S2 P 4 28		S2-P4-28					EC1-12"			
S2 P 4 29		S2-P4-29					EC1-18" flat			
S2 P 4 32		S2-P4-32					EC1-12"			
S2 P 4 33		S2-P4-33					EC2-2"			
S2 P 4 35		S2-P4-35					EC1-12"			
S2 P 4 37		S2-P4-37					EC1-4"			
S2 P 4 41		S2-P4-41					EC2-2"			
S2 P 5 1 R		S2-P5-1RT					EC1-1"			
S2 P 5 2		S2-P5-2			CM HL-12" 24"					
S2 P 5 13		S2-P5-13			CS HL-6"					
S2 P 5 18		S2-P5-18			CS HL-6"					
S2 P 5 28		S2-P5-28			CS HL SL-3"					
S2 P 5 44		S2-P5-44			CS HL-3" inside					
S2 P 5 49		S2-P5-49			CS HL-3"					
S2 P 5 56		S2-P5-56					EC1-2"			
S2 P 5 73		S2-P5-73					EC1-1"			
S2 P 5 82		S2-P5-82			MU Heifex	CS HL-3"				
S2 P 5 93		S2-P5-93			MU Heifex	CS HL-3"				
S2 P 5 94		S2-P5-94			MU Heifex	CS HL-3"				
S2 P 5 95		S2-P5-95			MU Heifex	CS HL-3"				
S2 P 5 12		S2-P5-12					EC1-2"			
S2 P 6 9		S2-P6-9					EC1-4"			
S2 P 6 18		S2-P6-18					EC2-6"			
S2 S 1 4		S2-S1-4			CS HL-6"					
S2 S 1 5		S2-S1-5			CS HL-30"		EC1-3"			
S2 S 1 5 S		S2-S1-5SL					EC1-4"			
S2 S 1 9		S2-S1-9			CS HL-2"		EC1 PP-1"			
S2 S 1 25 R		S2-S1-25R			PP Dutchman-4 sq in					
S2 S 1 30		S2-S1-30			CS HL-6"					
S2 S 1 30 B		S2-S1-30B			Open Joint					
S2 S 1 31		S2-S1-31			CS HL-6"					
S2 S 1 34		S2-S1-34			CS HL-6"					
S2 S 2 1 R		S2-S2-1RT					EC1-1"			
S2 S 2 4		S2-S2-4					EC1 PP-12"			

S2 UPPER Schedule of Stone Defects - South Elevations										
ELEVATION REFERENCE	FLOOR REFERENCE	MASONRY COURSE NUMBER	STONE COURSE NUMBER	PHOTO TAG	GENERAL DEFECT CODES	CRACKED DEFECT CODES	CHIPPED DEFECT CODES	SPALLED DEFECT CODES	EXFOLIATION DEFECT CODES	COMMENTS
S2 S 2 34 R		S2-S2-34R					CS HL SL-18"		EC1 PP-4"	
S2 S 2 43		S2-S2-43					CS HL-4"			
S2 S 4 1 R		S2-S4-1RT								
S2 S 4 17		S2-S4-17					EC2 PP-3"			
S2 S 4 30 R		S2-S4-30R					EC1-2"			
S2 S 4 32		S2-S4-32					EC1-2"			
S2 S 5 1 R		S2-S5-1RT					EC1-1"			
S2 S 5 15		S2-S5-15					EC2 PP-2"			
S2 S 5 46 R		S2-S5-46R					CS HL-2"			
S2 S 6 3		S2-S6-3					EC1-2" 2"			
S2 S 6 6 L		S2-S6-6L					EC1-2" 3"			
S2 S 6 9		S2-S6-9					EC1-1"			
S2 S 6 18		S2-S6-18					EC1 PP-1"			
S2 S 6 30		S2-S6-30					EC2-3"			
S2 S 6 41		S2-S6-41					EC1-1"			
S2 S 6 42		S2-S6-42					EC2-3"			
S2 S 6 42 R		S2-S6-42R					EC1-12"			
S2 S 6 44 R		S2-S6-44R					EC1-1"			
S2 S 7 1 R		S2-S7-1RT					CS HL-1"		EC1 PP-1"	
S2 S 7 3		S2-S7-3					EC1-4"			
S2 S 7 11 L		S2-S7-11L					EC1-1"			
S2 S 8 3 L		S2-S8-3L					EC1-1"			
S2 S 8 13 R		S2-S8-13R					CS HL PP-18"			
S2 S 8 32 R		S2-S8-32R					CS HL-1"			
S2 S 9 3		S2-S9-3					EC1 PP-2"			
S2 S 10 3		S2-S10-3					EC1-1"			
S2 S 11 4		S2-S11-4					EC1 PP-1"			
S2 S 11 19 R		S2-S11-19R					EC1-3"			
S2 S 11 19 R		S2-S11-19R						SP1 PP-1 sq in		
S2 S 11 22 R		S2-S11-22R			Random Smears					
S2 S 11 26 R		S2-S11-26R			Random Smears					
S2 S 12 30		S2-S12-30					EC1-3"			
S2 S 12 31		S2-S12-31					EC2-3"			
S2 S 12 32		S2-S12-32			CS HL-3"		EC1-20"			
S2 T 1 4		S2-T1-4					EC1 PP-1"			
S2 T 1 22		S2-T1-22						E1-20%		
S2 T 1 22 R		S2-T1-22R						E1-100%		
S2 T 2 30 R		S2-T2-30R					EC1-1" 2"			
S2 T 3 4		S2-T3-4					EC1-1"			
S2 T 3 11 L		S2-T3-11L					EC1-1"			
S2 T 3 19 R		S2-T3-19R					EC1-1"			
S2 T 4 26		S2-T4-26			Hole 3/8"x3/8"					
S2 T 4 27 L		S2-T4-27L					EC1-1"			
S2 T 4 27 R		S2-T4-27R			Random Smears					
S2 T 5 33		S2-T5-33					EC1 PP-2"			
S2 T 6 52		S2-T6-52					CS HL-2"			
S2 T 7 1		S2-T7-1					EC1-1" 2" East Face			
S2 T 7 3		S2-T7-3					EC1-1"			
S2 T 7 6 L		S2-T7-6L					EC1-4"			
S2 T 7 17 L		S2-T7-17L					EC1-2"			
S2 T 7 27		S2-T7-27					EC2-10 sq in			
S2 T 7 28		S2-T7-28					EC2-2"			
S2 T 7 29		S2-T7-29					CM HL-5" 7"			
S2 T 7 31		S2-T7-31					EC2-2" Right Side			
S2 T 8 2		S2-T8-2					EC1-4"			
S2 T 8 3		S2-T8-3					EC1-2"			
S2 T 8 7		S2-T8-7					EC2-3"			
S2 T 8 8		S2-T8-8					EC1-3"			
S2 T 8 10		S2-T8-10					EC1-6"			
S2 T 8 14		S2-T8-14					EC1-1"			
S2 T 8 15		S2-T8-15					EC1-1" EC2-3"			
S2 T 8 17		S2-T8-17					CS HL-2"			

Grand total: 129

MSR 710 South 2nd Street, 8th Floor
 Milwaukee, Wisconsin 53204-1380
 Architecture, Interiors and Urban Design
 www.msrblog.com

Ken Saki Design, Inc.
 360 South Parkview Dr
 Milwaukee, WI 53219
 414.251.3800

KWW
 1800 Century Way, Suite
 200
 Milwaukee, WI 53219
 414.251.8000

MEP Engineers
 MEP Associates
 880 West Center Road, Suite 175
 Wauwatosa, WI 53226
 414.274.9122

Lighting Designer
 Gallina Design
 1800 Century Way, Suite
 200
 Milwaukee, WI 53219
 414.251.8000

Preservation Architect
 Charles Quagliana, AIA
 1600 Milwaukee Ave.
 Milwaukee, WI 53233
 414.251.8000

Building Envelope Consultant
 InSite Consulting Architects
 1000 North State Street, 200
 Milwaukee, WI 53233
 414.251.8000

Fire & Code Consultant
 Summit Fire Consulting
 1000 North State Street, 200
 Milwaukee, WI 53233
 414.251.8000

Architectural Consultant
 KRA
 1800 Century Avenue, Suite 200
 Milwaukee, WI 53219
 414.251.8000

Architectural
 CIVIL ENGINEERS
 1800 Century Avenue, Suite 200
 Milwaukee, WI 53219
 414.251.8000

Madison Municipal Building
 215 Martin Luther King, Jr. Blvd
 Madison, WI 53703

DATE: 11/23/23
 DRAWING NO: BID ISSUE
 SHEET NO: 2.8

PROJECT NO: 7939
 BID ISSUE

S2 P, S, T Stone Masonry Defect Schedules

S3 Schedule of Stone Defects - South Elevations											
ELEVATION ORIENTATION	FLOOR REFERENCE	LOCATION	COORDINATE	STONE COURSE NUMBER	PHOTO TAG	GENERAL DEFECT CODES	CRACKED DEFECT CODES	CHIPPED DEFECT CODES	SPALLED DEFECT CODES	EXFOLIATION DEFECT CODES	COMMENTS
S 3 B 5 4				S3B54					EC1 PP-1"		
S 3 B 5 5				S3B55					EC2 2"		
S 3 B 5 6				S3B56			CS OC-6"				
S 3 B 5 7				S3B57			CS OP SL-6"				
S 3 B 6 4	L			S3B64L					EC1-2"		
S 3 B 6 5	R			S3B65R					EC1-4"		
S 3 B 6 8				S3B68					EC2-2", 8"		
S 3 B 7 4				S3B74			CS HL-3"				
S 3 B 7 6				S3B76			CS OP PP-18"				
S 3 B 8 6				S3B86					EC2 10"		
S 3 B 8 7				S3B87					EC2-33"		
S 3 B 8 8				S3B88			CS HL-2"			SP2-70 sq in	
S 3 B 8 9	S			S3B89S			CM HL 5", CC-14"		EC2-6@2"		
S 3 B 9 2				S3B92			CS HL SL-3"				
S 3 B 9 3	L			S3B93L					EC1-1"		
S 3 B 9 4	R			S3B94R					EC1-1"		
S 3 B 9 6				S3B96			CS HL-18"		EC1-2", EC2-2"		
S 3 B 10 4				S3B104					EC1-2"		
S 3 B 10 6				S3B106					EC2-7"		
S 3 B 10 7				S3B107					EC1-3"		
S 3 B 10 7S				S3B107S			CM HL 1", 4"		EC1-3", 3"		
S 3 B 11 4				S3B114					EC1-1"		
S 3 B 11 7				S3B117					EC2-6"		
S 3 F 1 1				S3F11			CS HL-4"				
S 3 F 1 4				S3F14			CS HL-6"				
S 3 F 1 7				S3F17			CM HL-2", 3"				
S 3 F 2 5				S3F25					EC1-12"		
S 3 F 2 6				S3F26			CM HL 3", 17" SL				
S 3 F 3 4	S			S3F34SL			CS HL-6"				
S 3 F 3 5	L			S3F35L					EC1-6"		
S 3 F 3 6				S3F36			CS HL SL-6"				
S 3 F 3 7				S3F37			CS HL-3"				
S 3 F 4 3				S3F43					EC1-2"		
S 3 F 4 4	R			S3F44R					EC1-12"		
S 3 F 4 6				S3F46			CS HL-6", 2"				
S 3 F 5 5				S3F55					EC1-6"		
S 3 F 5 6				S3F56			CM HL 2", 8"				
S 3 F 7 8				S3F78			CS HL-2"				
S 3 F 8 5				S3F85			CS HL SL-18"				
S 3 F 9 8				S3F98			CM HL 6", 3 sq in (spall?)		EC2-3"		
S 3 F 9 8E				S3F98E					EC2-2"		
S 3 F 11 3				S3F113					EC1-16"		
S 3 F 11 4				S3F114			CS HL-3"		EC1-1"		
S 3 F 12 3				S3F123			CS HL SL-17"				
S 3 F 12 6				S3F126			CS HL-3"				
S 3 F 13 3				S3F133					EC1-1"		
S 3 F 13 4				S3F134			CS HL-2"		EC1-1", 2"		
S 3 P 2 8	E			S3P28E			Helix to Ajoning				
S 3 P 2 9				S3P29					EC2-2"		
S 3 P 3 6				S3P36			PP Dutchman-8 sq in				
S 3 S 1 3				S3S13			PA GM 3"				
S 3 S 1 5				S3S15			PA GM 2"				
S 3 S 2 5				S3S25					EC1-2"		
S 3 S 3 6				S3S36					EC1-1"		
S 3 S 5 3				S3S53					EC1-2"		
S 3 S 7 1				S3S71					EC1-2"		
S 3 S 9 6				S3S96					EC1-2"		
S 3 S 11 2				S3S112					EC1-2"		
S 3 T 1 4				S3T14			CS OP-24", CM HL-2", 1"		EC1-1", EC2-3"		
S 3 T 2 3				S3T23						SP2-80 sq in	
S 3 T 2 3L				S3T23L						SP2-96 sq in	
S 3 T 6 6				S3T66					EC1-3"		
Grand Total: 62											

MSR 710 South 2nd Street, 8th Floor
 Milwaukee, Wisconsin 53201-3380
 (414) 251-0100
 www.msrblog.com

Architects
 Ken Saki Design, Inc
 300 South Park Street, Suite 50
 Milwaukee, WI 53210
 414.251.3800

Structural Engineering Technology, A/C
 KWW
 1800 Century Way, Suite
 200
 Milwaukee, WI 53210
 414.251.0000

MEP Engineers
 MEP Associates
 800 West Center Street, Suite 175
 Milwaukee, WI 53210
 414.251.0100

Lighting Designer
 Gallina Design
 1800 Century
 Milwaukee, WI 53210
 414.251.0000

Preservation Architect
 Charles Quagliana, AIA
 1000 Milwaukee Ave.
 Milwaukee, WI 53233
 414.251.0000

Building Envelope Consultant
 InSite Consulting Architects
 111 E. Main Street, Suite 200
 Milwaukee, WI 53202
 414.251.0000

Fire & Code Consultant
 Summit Fire Consulting
 111 E. Main Street, Suite 200
 Milwaukee, WI 53202
 414.251.0000

Architectural Consultant
 KRA
 800 Century Avenue, Suite 200
 Milwaukee, WI 53210
 414.251.0000

MEP Engineers
 CIVIL ENGINEERS
 800 Century Avenue, Suite 200
 Milwaukee, WI 53210
 414.251.0000

Architectural Consultant
 KRA
 800 Century Avenue, Suite 200
 Milwaukee, WI 53210
 414.251.0000

Architectural Consultant
 KRA
 800 Century Avenue, Suite 200
 Milwaukee, WI 53210
 414.251.0000

Architectural Consultant
 KRA
 800 Century Avenue, Suite 200
 Milwaukee, WI 53210
 414.251.0000

Architectural Consultant
 KRA
 800 Century Avenue, Suite 200
 Milwaukee, WI 53210
 414.251.0000

Architectural Consultant
 KRA
 800 Century Avenue, Suite 200
 Milwaukee, WI 53210
 414.251.0000

Architectural Consultant
 KRA
 800 Century Avenue, Suite 200
 Milwaukee, WI 53210
 414.251.0000

Architectural Consultant
 KRA
 800 Century Avenue, Suite 200
 Milwaukee, WI 53210
 414.251.0000

Architectural Consultant
 KRA
 800 Century Avenue, Suite 200
 Milwaukee, WI 53210
 414.251.0000

Architectural Consultant
 KRA
 800 Century Avenue, Suite 200
 Milwaukee, WI 53210
 414.251.0000

Architectural Consultant
 KRA
 800 Century Avenue, Suite 200
 Milwaukee, WI 53210
 414.251.0000

Architectural Consultant
 KRA
 800 Century Avenue, Suite 200
 Milwaukee, WI 53210
 414.251.0000

Architectural Consultant
 KRA
 800 Century Avenue, Suite 200
 Milwaukee, WI 53210
 414.251.0000

Architectural Consultant
 KRA
 800 Century Avenue, Suite 200
 Milwaukee, WI 53210
 414.251.0000

Architectural Consultant
 KRA
 800 Century Avenue, Suite 200
 Milwaukee, WI 53210
 414.251.0000

Architectural Consultant
 KRA
 800 Century Avenue, Suite 200
 Milwaukee, WI 53210
 414.251.0000

Architectural Consultant
 KRA
 800 Century Avenue, Suite 200
 Milwaukee, WI 53210
 414.251.0000

S3 Stone
 Masonry Defect
 Schedule

W2 Schedule of Stone Defects - West Elevations											
ELEVATION ORIENTATION	FLOOR REFERENCE	FLOOR NUMBER	STONE COURSE NUMBER	STONE SEQUENCE NUMBER	PHOTO TAG	GENERAL DEFECT CODES	CRACKED DEFECT CODES	CHIPPED DEFECT CODES	SPALLED DEFECT CODES	EXFOLIATION DEFECT CODES	COMMENTS
W2 B 5	11		W2-B5-11						SP2 PP SL 24 sq in		
W2 B 5	23		W2-B5-23					EC2-5*			
W2 B 6	10		W2-B6-10				CS HL-2*	EC2-8*			
W2 B 7	1		W2-B7-1				CS HL-2*			E1.30 sq in	
W2 B 7	3		W2-B7-3				CS HL-17*				
W2 B 9	2		W2-B9-2				CS HL-2*				
W2 B 9	7		W2-B9-7					EC1-8*			
W2 B 9	9		W2-B9-9				CS HL-10*				
W2 B 9	14		W2-B9-14				CS HL-6*	EC2-2*			
W2 B 10	3		W2-B10-3				CS HL-6*				
W2 B 10	8		W2-B10-8					EC1-1*, EC2-15*			
W2 B 10	10		W2-B10-10					EC1 SL-6*			
W2 B 10	12		W2-B10-12					EC1-8*			
W2 B 10	14		W2-B10-14				CM HL 2" 3"	EC2-2*, 2"			
W2 B 10	15		W2-B10-15					EC2-2*, EC1-11*			
W2 B 10	23		W2-B10-23					EC2-4*			
W2 B 11	1	R	W2-B11-0					EC2 SL 2"			
W2 B 11	3		W2-B11-3								
W2 B 11	11		W2-B11-11					EC2-3*			
W2 B 11	17		W2-B11-17					EC2-8*			
W2 F 1	1	R	W2-F1-2R		PA GM 2'		CS OC-1*				
W2 F 1	3		W2-F1-3				CS HL SL-8*				
W2 F 1	4		W2-F1-4		PA GM 2'		CM HL 2" 2"				
W2 F 1	7		W2-F1-7		PA GM 3'			EC1-1*			
W2 F 1	9		W2-F1-9					EC1-1*			
W2 F 1	10		W2-F1-10				CS HL-4*				
W2 F 1	16		W2-F1-16		PA GM 2'		CS HL-6*				
W2 F 1	17		W2-F1-17		PA GM 3'			EC1-1*			
W2 F 1	18		W2-F1-18		PA GM 3'						
W2 F 1	19		W2-F1-19				CS OC-8*				
W2 F 2	2		W2-F2-2				CM HL 7" 8"				
W2 F 2	3		W2-F2-3				CS HL-2*				
W2 F 2	4		W2-F2-4				CS HL-2*				
W2 F 2	5		W2-F2-5				CS HL-2*				
W2 F 2	8		W2-F2-8				CM HL-3*				
W2 F 2	15		W2-F2-15		PA GM 1"						
W2 F 2	19		W2-F2-19				CS HL-2*				
W2 F 3	6	S	W2-F3-6SL					EC2-3*			
W2 F 3	8		W2-F3-8				CS HL-2*				
W2 F 3	11		W2-F3-11				CS HL-2*	EC1-11, 1"			
W2 F 3	14		W2-F3-14				CS HL-2*				
W2 F 3	15		W2-F3-15					EC2-2*			
W2 F 4	4		W2-F4-4		PA GM 1"						
W2 F 4	4	L	W2-F4-4L				CS HL-4*	EC1-1*			
W2 F 4	8		W2-F4-8		PA GM 1"						
W2 F 4	8	R	W2-F4-8R				CS HL-6*				
W2 F 4	10	L	W2-F4-10L					EC1-2*			
W2 F 4	13	L	W2-F4-13L					EC1-2*			
W2 F 4	16		W2-F4-16		PA GM 2'						
W2 F 4	17		W2-F4-17					EC1-1*			
W2 F 4	18		W2-F4-18				CS HL-2*				
W2 F 4	19		W2-F4-19		FH2-3B*						
W2 F 5	3		W2-F5-3					EC1-1*			
W2 F 5	8	L	W2-F5-8L					EC2-2*, 2"			
W2 F 5	9	R	W2-F5-9R					EC1-6*, EC1-4*			
W2 F 5	10	L	W2-F5-10L					EC1-1*			
W2 F 5	17		W2-F5-17		FH2-3B*		CS HL SL-17*				
W2 F 6	2		W2-F6-2				CS HL-2*				
W2 F 6	10	L	W2-F6-10L					EC1-2*, 2"			
W2 F 7	7	R	W2-F7-7R					EC1-1*			
W2 F 7	9	R	W2-F7-9R					EC1-6*			
W2 F 8	7	L	W2-F8-7L					EC1-1*			
W2 F 8	8	R	W2-F8-8R					EC1-2*			
W2 F 8	19		W2-F8-19		FH2-12*						
W2 F 9	6	L	W2-F9-6L						SP12 sq in		
W2 F 9	7	R	W2-F9-7R								
W2 F 9	17		W2-F9-17		FH2-12*		CS HL SL-17*	EC1-2*, EC2-2*			
W2 F 10	1	R	W2-F10-1R					EC1-2*			
W2 F 10	7	L	W2-F10-7L					EC1-3*			
W2 F 10	11		W2-F10-11				CS HL SL-5*	EC1-1*			
W2 F 10	11	R	W2-F10-11R					EC1-1*, 1", EC2-4			
W2 F 10	14	R	W2-F10-14R					EC2-3*			
W2 F 10	19		W2-F10-19		FH2-3B*			EC1-2*			
W2 F 10	20	R	W2-F10-20R				CS HL-2*	EC1-1*			
W2 F 11	1	R	W2-F11-1R				CS HL PP-8*				
W2 F 11	5	R	W2-F11-5R					EC1-1*			
W2 F 11	5	H	W2-F11-5H					EC2-2*			
W2 F 11	15		W2-F11-15				CS HL SL-4*				
W2 F 11	19		W2-F11-19								
W2 F 12	4		W2-F12-4				CM HL-3*				
W2 F 12	16		W2-F12-16					EC1-1*			
W2 F 12	18		W2-F12-18				CS HL-3*				
W2 F 13	5		W2-F13-5					EC2-2*			
W2 F 13	6		W2-F13-6					EC2-3*, 8"			
W2 F 13	15		W2-F13-15					EC1-1*			
W2 F 13	16		W2-F13-16					EC2-2*			
W2 F 13	18		W2-F13-18					EC1-2*			
W2 F 13	19		W2-F13-19					EC1-6*			
W2 F 13	2		W2-F13-2		CM HL 17.5"			EC2 PP-2*			
W2 P 1	4		W2-P1-4					EC2-2*			
W2 P 1	8		W2-P1-8					EC1-2*, EC2-5*			
W2 P 1	11		W2-P1-11					EC1 PP-3*			
W2 P 1	15		W2-P1-15		PA GM 2'		CS HL-2*				
W2 P 1	18		W2-P1-18				CS HL-6*	EC1-4*			

Grand total: 187

W2 Schedule of Stone Defects - West Elevations											
ELEVATION ORIENTATION	FLOOR REFERENCE	FLOOR NUMBER	STONE COURSE NUMBER	STONE SEQUENCE NUMBER	PHOTO TAG	GENERAL DEFECT CODES	CRACKED DEFECT CODES	CHIPPED DEFECT CODES	SPALLED DEFECT CODES	EXFOLIATION DEFECT CODES	COMMENTS
W2 P 1	19		W2-P1-19		PA GM 1"						
W2 P 1	21		W2-P1-21				CS HL-5*				
W2 P 2	1	R	W2-P2-1R				CS HL-6*				
W2 P 2	4		W2-P2-4				CS HL-2*				
W2 P 3	2		W2-P3-2					EC1-2*			
W2 P 3	5		W2-P3-5					EC1-4*			
W2 P 3	8		W2-P3-8					EC2-2*, 2"			
W2 P 3	14		W2-P3-14					EC1-1*			
W2 P 3	15		W2-P3-15					EC1-11*			
W2 P 3	16		W2-P3-16					EC1-1*			
W2 P 3	19		W2-P3-19				CS HL-2*				
W2 P 4	1	R	W2-P4-1R					EC2-2*			
W2 P 4	2		W2-P4-2					EC1-1*			
W2 P 4	4		W2-P4-4					EC1-1*			
W2 P 4	5		W2-P4-5					EC1 PP-4*			
W2 P 4	7		W2-P4-7					EC2-20 sq in, 10"			
W2 P 4	8		W2-P4-8					EC1-2*			
W2 P 4	11		W2-P4-11					EC2-2, 4", 2"			
W2 P 4	12		W2-P4-12		PA GM 2'			EC1-2*			
W2 P 4	13		W2-P4-13				CS HL-4*	EC1-1*, EC2-8*			
W2 P 4	17		W2-P4-17					EC1-11, 1"			
W2 P 5	1		W2-P5-1					EC1-8*			
W2 P 5	4		W2-P5-4				CS HL-3*				
W2 P 5	5		W2-P5-5				CS HL-3*				
W2 P 5	8		W2-P5-8				CS HL-3*				
W2 P 5	8		W2-P5-8				CS HL SL-3*				
W2 P 5	9		W2-P5-9				CS HL-3*				
W2 P 5	13		W2-P5-13		PA GM 2'						
W2 P 5	14		W2-P5-14				CS HL SL-3*				
W2 P 5	15		W2-P5-15				CS HL SL-3*				
W2 P 5	16		W2-P5-16				CS HL SL-3*	EC1-4*			
W2 P 5	17		W2-P5-17				CS HL SL-3*				
W2 P 5	18		W2-P5-18				CS HL SL-3*				
W2 P 5	19		W2-P5-19				CS HL SL-3*				
W2 P 5	20		W2-P5-20				CS HL SL-3*				
W2 P 5	21		W2-P5-21				CS HL SL-3*				
W2 P 5	22		W2-P5-22				CS HL SL-3*				
W2 P 5	23		W2-P5-23				CS HL SL-3*	EC2 PP-5*			
W2 P 5	28		W2-P5-28				CS HL SL-3*				
W2 P 5	33		W2-P5-33					EC2-3*			
W2 P 5	33		W2-P5-33					EC1-1*, 3"			
W2 P 5	34		W2-P5-34					EC1 PP-3*			
W2 P 6	10		W2-P6-10				CS OP SL 20" crack turned into joint				
W2 S 1	1		W2-S1-1				CM HL-12*				
W2 S 1	1	R	W2-S1-1R					EC1-1*			
W2 S 1	8		W2-S1-8				CS HL-2*	EC1-6*, 2", 2", 8"			
W2 S 1	9	L	W2-S1-9L					EC1-1*			
W2 S 1	10		W2-S1-10				CM HL 6" 2", 1"	EC1-2*, 2"			
W2 S 1	11	L	W2-S1-11L					EC1-1*, 1"			
W2 S 1	12		W2-S1-12					EC1-3", 3", 8"			
W2 S 1	13	R	W2-S1-13R				CS HL-2*	EC1-1*			
W2 S 1	14		W2-S1-14		PA GM 1"		CS HL-1*				
W2 S 2	1	R	W2-S2-1R					EC1-3*			
W2 S 2	1	L	W2-S2-1L					EC1-1*			
W2 S 2	24		W2-S2-24				CS HL SL-17*				
W2 S 3	1		W2-S3-1					EC1-1*			
W2 S 3	3		W2-S3-3					EC1-3*			
W2 S 3	19		W2-S3-19				CS HL-5*				
W2 S 3	19	R	W2-S3-19R					EC2-2*			
W2 S 4	1		W2-S4-1					EC1-3*			
W2 S 4	24		W2-S4-24				CS HL-2*				

W3 Schedule of Stone Defects - West Elevations										
ELEVATION ORIENTATION	ELEVATION REFERENCE	WORK ORDER NUMBER	STONE SOURCE NUMBER	PHOTO TAG	GENERAL DEFECT CODES	CRACKED DEFECT CODES	CHIPPED DEFECT CODES	SPALLED DEFECT CODES	EXFOLIATION DEFECT CODES	COMMENTS
W3 B 11 1			W3-B11-1				EC2 SL-10 sq in			
W3 B 11 2A			W3-B11-2A				EC2 SL-16 sq in			
W3 B 11 3A			W3-B11-3A				EC2 SL-20 sq in			
W3 B 11 4			W3-B11-4			CS HL-PP-15'	EC1 SL-3'			
W3 F 1 1			W3-F1-1				EC2 SL-4 sq in			
W3 F 1 2			W3-F1-2				EC2-8"			
W3 F 1 3			W3-F1-3			CS OC-8"	EC1-2"		E1	
W3 F 1 4			W3-F1-4						E1-100%	
W3 F 1 4 L			W3-F1-4L	FH1-3@ 1/4" dia					E1-100%	
W3 F 1 5			W3-F1-5				EC2-8 sq in		E1-100%	
W3 F 1 5 R			W3-F1-5R	FH1-2@3/8"		CS OC SL-8"			E1-60%	
W3 F 1 6			W3-F1-6			CS OC SL-8"			E1-40%	
W3 F 1 7			W3-F1-7			CS HL 12", CM OC SL-10" 12"				
W3 F 1 8			W3-F1-8				EC1-1",3"			
W3 F 2 2			W3-F2-2	PA GM 1"						
W3 F 2 3			W3-F2-3			CS HL-2"				
W3 F 2 4			W3-F2-4						E1-8 sq in, 8 sq in	
W3 F 2 4 L			W3-F2-4L						E1-50%	
W3 F 2 5			W3-F2-5			CS HL SL-12"	EC1-1", EC2-8 sq in			
W3 F 2 5 R			W3-F2-5R			CS OP SL-8"	EC1-1"		E1-15%	
W3 F 2 7			W3-F2-7			CS HL-10"	EC1-4"			
W3 F 3 4			W3-F3-4	FH1 Repair if Removed				SP1 PP-3 sq in		
W3 F 3 6			W3-F3-6				EC1-1"			
W3 F 4 2			W3-F4-2	PA GM 1"						
W3 F 4 3			W3-F4-3	FH1 Repair if Removed, PA GM 2"						
W3 F 4 5			W3-F4-5				EC1-2"			
W3 F 4 8			W3-F4-8	Geodetic Survey Bench Mark						
W3 F 5 4 L			W3-F5-4L	FH1 Repair if Removed, FH1 SL-3@3/8"						
W3 F 5 8			W3-F5-8			CS HL-2"				
W3 F 6 3			W3-F6-3	FH1-1ea 1/4" dia						
W3 F 6 6			W3-F6-6	FH1 Repair if Removed						
W3 F 6 7			W3-F6-7			CS HL SL-17"				
W3 F 6 8 S			W3-F6-8S			CS HL-8"				
W3 F 7 2			W3-F7-2	FH1-1ea 1/4" dia						
W3 F 7 5 R			W3-F7-5R	PA 3 sq in						
W3 F 7 6			W3-F7-6	FH1 Repair if Removed						
W3 F 7 7			W3-F7-7	FH1 Repair if Removed						
W3 F 8 6			W3-F8-6	FH2-1/4", 1/4"						
W3 F 9 3			W3-F9-3				EC1 PP-1"			
W3 F 9 4			W3-F9-4				EC1 PP-1"			
W3 F 9 6			W3-F9-6	FH2-1/4", 1/4"						
W3 F 10 3			W3-F10-3				EC1-2"			
W3 F 10 4			W3-F10-4				EC1 PP-1", 1"			
W3 F 10 7			W3-F10-7				EC1 PP-2"			
W3 F 10 8 S			W3-F10-8S				EC1-2"			
W3 F 10 8			W3-F10-8				EC1-1"			
W3 F 11 2			W3-F11-2			CS HL-24"				
W3 F 11 4			W3-F11-4			CM HL SL-2", 10"				
W3 F 12 3			W3-F12-3			CS HL SL-17"				
W3 F 12 8 S			W3-F12-8S				EC2 PP-2"			
W3 F 12 3			W3-F12-3			CM HL 2", 2", CS HL 10"	EC1 SL 17", EC1 2", EC1 2", EC2 2"			
W3 P 1 1			W3-P1-1				EC1-1", 2", 2"			
W3 P 1 5			W3-P1-5						E1-3 sq in, 3 sq in	
W3 P 2 2			W3-P2-2							
W3 P 2 3			W3-P2-3			CS HL-2"				
W3 P 2 7			W3-P2-7				EC1-1"			
W3 P 3 2			W3-P3-2				EC2 30 sq in (Major)			
W3 P 3 3			W3-P3-3			CS HL SL-3", 7"				
W3 P 3 4			W3-P3-4				EC2-2"			
W3 P 3 6			W3-P3-6				EC2-2", 1"			
W3 P 3 7			W3-P3-7				EC1-1", 1"			
W3 P 3 8			W3-P3-8			CS HL-3"				
W3 P 4 2			W3-P4-2			CS HL-1"				
W3 P 4 3			W3-P4-3				EC2-2"			
W3 P 4 4			W3-P4-4				EC2-2", 16 sq in			
W3 P 4 6			W3-P4-6				EC1-1"			
W3 P 5 3			W3-P5-3				EC2-3"			
W3 P 5 4			W3-P5-4				EC1-1"			
W3 P 5 7			W3-P5-7	PA GM 4", 4"			EC1-1"			
W3 P 6 1			W3-P6-1	PA GM 2"						
W3 S 1 3			W3-S1-3			CS HL SL-18"				
W3 S 1 5			W3-S1-5			CS HL SL-3" no post				
W3 S 2 3			W3-S2-3			CS HL-2"				
W3 S 2 6			W3-S2-6			CS OP SL-17"				
W3 S 5 5			W3-S5-5			CS HL-2"				
W3 S 6 6			W3-S6-6			CS HL-8"				
W3 S 7 4			W3-S7-4				EC2 PP-2"			
W3 S 9 4			W3-S9-4					SP1 PP-2 sq in		
W3 S 12 1			W3-S12-1				EC1-3"			
W3 S 12 4 H			W3-S12-4H				EC1-1"		SP1 PP-2 sq in	
W3 S 12 7			W3-S12-7				EC2-6", 2"			
W3 T 1 1 3			W3-T1-3			CS HL-6"				
W3 T 1 4			W3-T1-4			CS HL-12"	EC1-12"		E2 40 sq in, E1 all over	
W3 T 1 5			W3-T1-5				EC2-2"			
W3 T 2 4			W3-T2-4				EC2-6", 8"			
W3 T 3 5			W3-T3-5				EC1 PP-1"			
W3 T 3 6 S			W3-T3-6S				EC1 PP-1"			
W3 T 4 2			W3-T4-2			CS HL-17"				
W3 T 5 3			W3-T5-3			CS HL-3"-Natural				
W3 T 6 1			W3-T6-1				EC1 PP-1"			
W3 T 6 4			W3-T6-4				EC1-1"			

Grand total: 61

MSR 710 South 2nd Street, 8th Floor
 Wausau, Wisconsin 54981-0380
 Phone: 715.833.6666
 Fax: 715.833.6667
 www.msrblog.com

Ken Saki Design, Inc
 300 South Parkside St
 Wausau, WI 54981
 715.833.3888

KJWW
 1800 Oakwood Way, Suite
 200
 Wausau, WI 54981
 715.833.3888

MEP Engineers
MEP Associates
 800 Blue Center Road, Suite 175
 Wausau, WI 54981
 715.833.3888

Lighting Designer
Gallina Design
 1000 Oakwood Way, Suite
 200
 Wausau, WI 54981
 715.833.3888

Preparation Architect
Charles Quagliana, AIA
 1000 Oakwood Way, Suite
 200
 Wausau, WI 54981
 715.833.3888

Building Envelope Consultant
InSite Consulting Architects
 1000 Oakwood Way, Suite 200
 Wausau, WI 54981
 715.833.3888

Fire & Code Consultant
Summit Fire Consulting
 1000 Oakwood Way, Suite
 200
 Wausau, WI 54981
 715.833.3888

Acoustic Consultant
KRA
 4000 Chicago Avenue, Suite 200
 Wausau, WI 54981
 715.833.3888

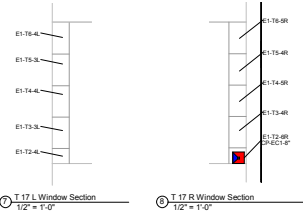
CIVIL ENGINEERS
 800 Center Street, Suite 201
 Wausau, WI 54981
 715.833.3888

Madison Municipal Building
 215 Martin Luther King, Jr. Blvd
 Madison, WI 53703

W3 Stone Masonry Defect Schedules



E1 Third Floor Reflected Header Plan
1/2" = 1'-0"

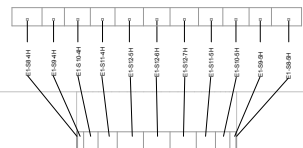


T 17 L Window Section
1/2" = 1'-0"

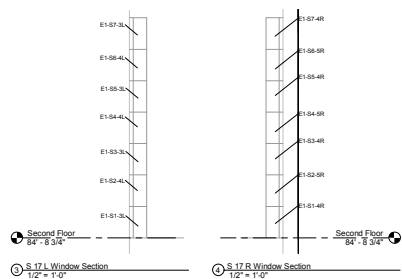
T 17 R Window Section
1/2" = 1'-0"



E1 Third Floor Sill Plan
1/2" = 1'-0"



E1 Second Floor Reflected Header Plan
1/2" = 1'-0"

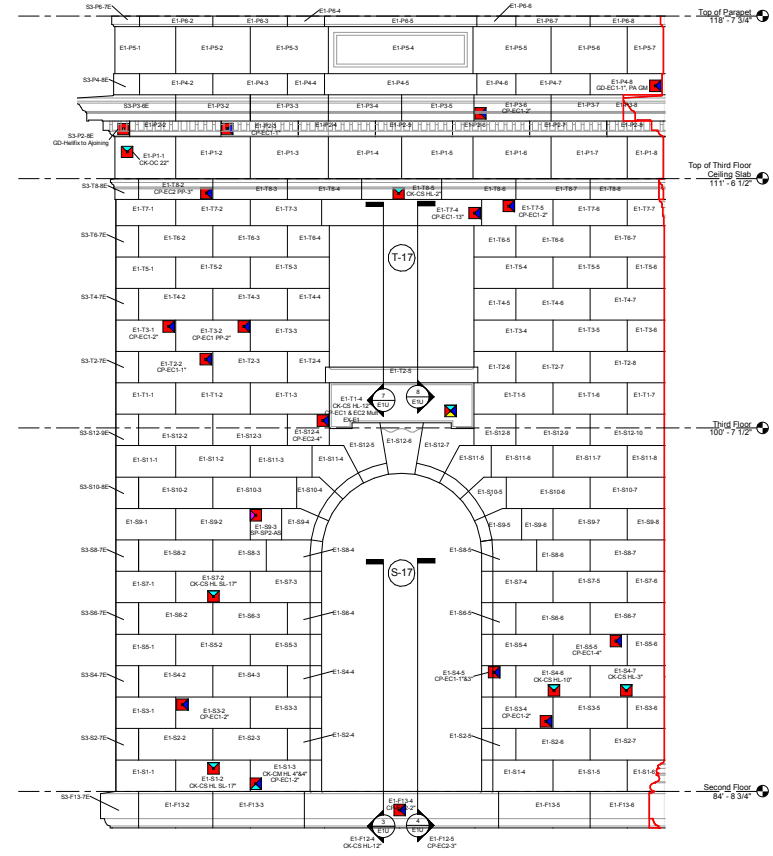


S 17 L Window Section
1/2" = 1'-0"

S 17 R Window Section
1/2" = 1'-0"



E1 Second Floor Sill Plan
1/2" = 1'-0"



E1 Elevation Upper Floors
1/2" = 1'-0"

MSR 710 South 2nd Street, 8th Floor
Milwaukee, Wisconsin 53201-2380
Architects: 412.225.0386 fax
Interior and: 412.342.2216 fax
Urban Design: www.msrblog.com

Civil Engineering and Landscape Architects
Ken Saki Design, Inc.
300 South Parkview Dr
Madison, WI 53713
608.251.3800 w

Structural Engineering Technology, Inc.
KWW
1500 Darling Way, Suite
200
Madison, WI 53713
608.222.8800 w

MEP Engineers
MEP Associates
500 Blue Canyon Road, Suite 175
Madison, WI 53713
608.278.2122 w

Lighting Designer
Gallina Design
1020 County
Madison, WI 53703
608.261.1028 w

Preservation Architect
Charles Quagliana, AIA
1001 University Ave.
Madison, WI 53706
608.261.8100 w

Building Envelope Consultant
InSite Consulting Architects
112 E. Main Street, Suite 200
Madison, WI 53703
608.261.8222 w

Fire & Code Consultant
Summit Fire Consulting
1000 University Ave., 9c
St. Paul, MN 55103
612.225.9376 w

Acoustical Consultant
KRA
4801 Chicago Avenue South, Suite 200
Minneapolis, MN 55412
612.835.8800 w

MECHANICAL
CIVIL ENGINEERS
560 Cooper Drive, Suite 201
Madison, WI 53705
608.261.1111 w

Madison Municipal Building
215 Martin Luther King, Jr. Blvd
Madison, WI 53703

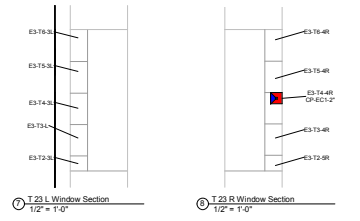
NO.	DESCRIPTION	DATE
1	ISSUE FOR BIDDING	10/20/16
2		
3		
4		
5		
6		
7		
8		
9		
10		

PROJECT NO: 7939
PROJECT NAME: BID ISSUE
DATE: 10/20/16

Masonry Detail Elevations / Sections



E3 Third Floor Reflected Header Plan
1/2" = 1'-0"

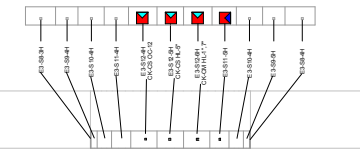


T 23 L Window Section
1/2" = 1'-0"

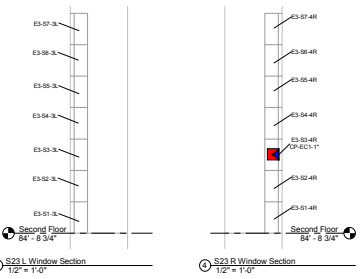
T 23 R Window Section
1/2" = 1'-0"



E3 Third Floor Sill Plan
1/2" = 1'-0"

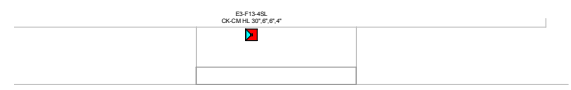


E3 Second Floor Reflected Header Plan
1/2" = 1'-0"

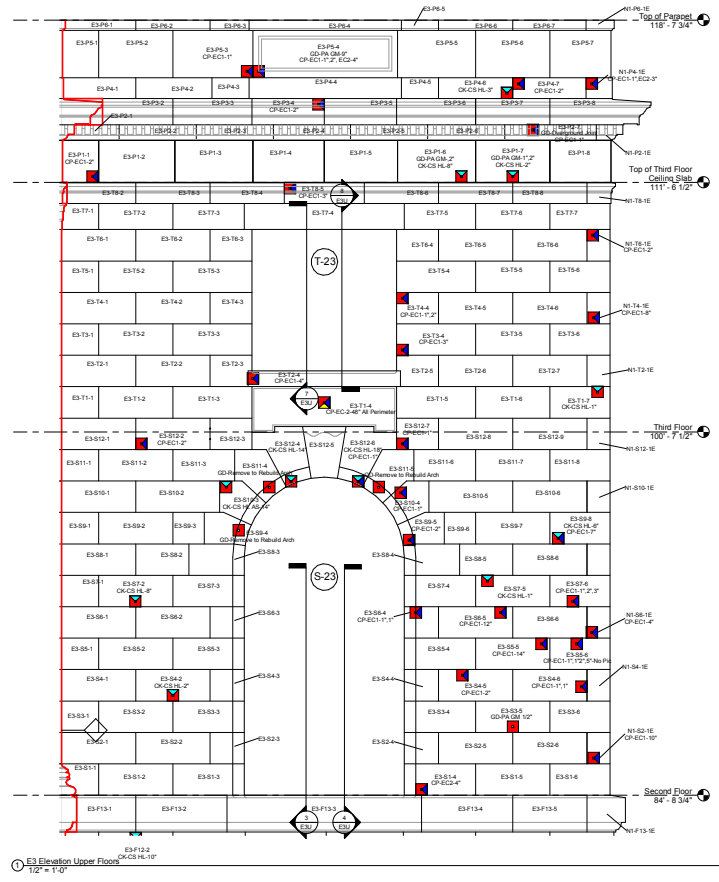


S 23 L Window Section
1/2" = 1'-0"

S 23 R Window Section
1/2" = 1'-0"



E3 Second Floor Sill Plan
1/2" = 1'-0"



E3 Elevation Upper Floors
1/2" = 1'-0"

MSR 710 South 2nd Street, 8th Floor
Madison, WI 53703
Phone: 608.224.1100
www.msrdesign.com

Civil Engineering and Landscape Architecture
Ken Saki Design, Inc.
360 South Parkview Dr
Madison, WI 53703
608.251.3800

Structural Engineering Technology, Inc.
KWW
1800 Goring Way, Suite
200
Madison, WI 53713
608.222.6600

MEP Engineers
MEP Associates
500 Blue Canyon Road, Suite 175
Madison, WI 53713
608.276.9322

Lighting Designer
Galina Design
1000 County
Madison, WI 53703
608.261.1000

Preservation Architect
Charles Quagliana, AIA
1601 Monmouth Ave.
Madison, WI 53705
608.262.8800

Building Envelope Consultant
InSite Consulting Architects
1121 S. Main Street, Suite 200
Madison, WI 53703
608.262.8000

Fire & Code Consultant
Summit Fire Consulting
2111 University Ave. W.
St. Paul, MN 55103
651.221.9300

Acoustical Consultant
KRA
5601 Chicago Avenue South, Suite 200
Wauwatosa, WI 53090
708.261.0000

Architect
CIVIL ENGINEERS
560 Cooper Drive, Suite 201
Madison, WI 53705

Madison Municipal Building
215 Martin Luther King, Jr. Blvd
Madison, WI 53703

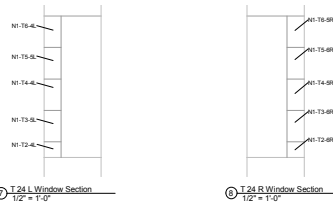
Item	Description	Quantity	Unit	Price
1	E3 21 to E3 2500			
2				
3				
4				
5				
6				
7				
8				
9				
10				
11				
12				
13				
14				
15				
16				
17				
18				
19				
20				
21				
22				
23				
24				
25				
26				
27				
28				
29				
30				
31				
32				
33				
34				
35				
36				
37				
38				
39				
40				
41				
42				
43				
44				
45				
46				
47				
48				
49				
50				
51				
52				
53				
54				
55				
56				
57				
58				
59				
60				
61				
62				
63				
64				
65				
66				
67				
68				
69				
70				
71				
72				
73				
74				
75				
76				
77				
78				
79				
80				
81				
82				
83				
84				
85				
86				
87				
88				
89				
90				
91				
92				
93				
94				
95				
96				
97				
98				
99				
100				

Project No: 7839
Bid Issue: BID ISSUE

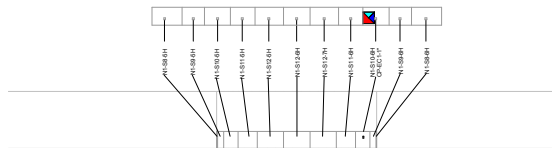
Masonry Detail Elevations / Sections

E3U

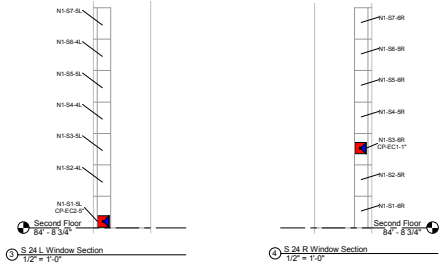
① N1 Third Floor Reflected Header Plan
1/2" = 1'-0"



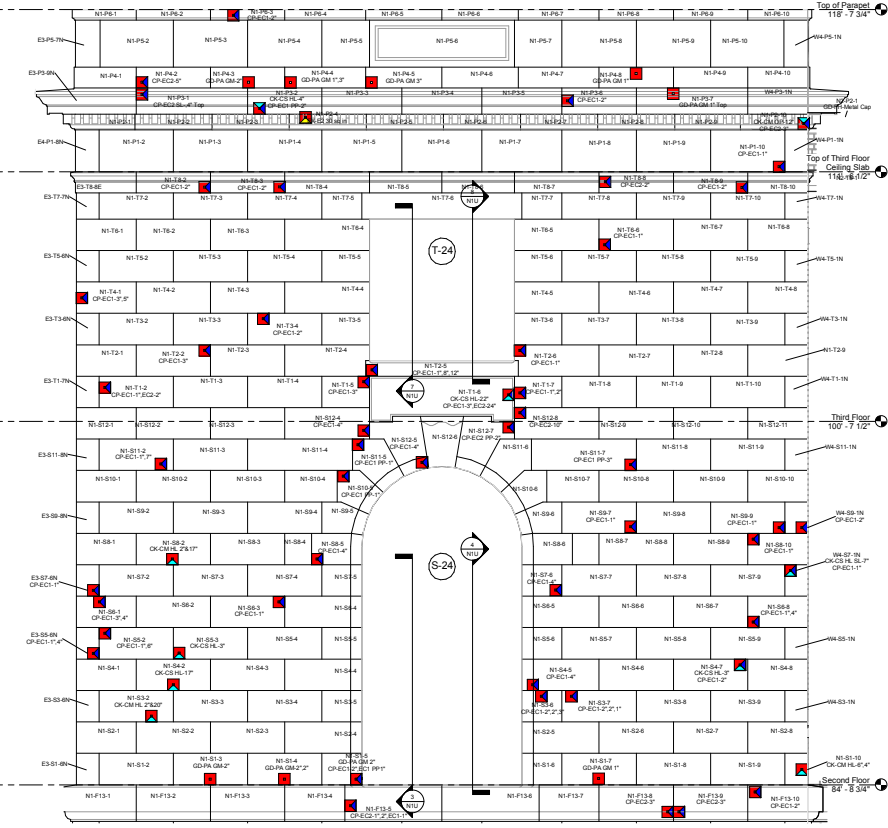
② N1 Third Floor Sill Plan
1/2" = 1'-0"



③ N1 Second Floor Reflected Header Plan
1/2" = 1'-0"



④ N1 Second Floor Sill Plan
1/2" = 1'-0"



⑤ N1 Elevation Upper Floors
1/2" = 1'-0"

MSR 710 South 2nd Street, 8th Floor
Milwaukee, Wisconsin 53201-2380
Architects: Ken Saki Design, Inc.
Structural Engineering: KJWW
MEP Engineers: MEP Associates
Lighting Designer: Gallina Design
Fire & Code Consultant: Summit Fire Consulting
Architectural Consultant: CRA
Civil Engineers: CIVIL ENGINEERS

Madison Municipal Building
215 Martin Luther King, Jr. Blvd
Madison, WI 53703

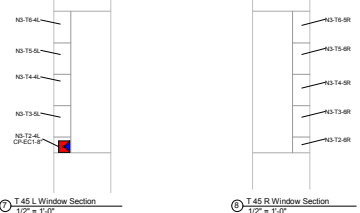
7939
BID ISSUE

Masonry Detail Elevations / Sections

N1U



③ N3 Third Floor Reflected Header Plan
1/2" = 1'-0"

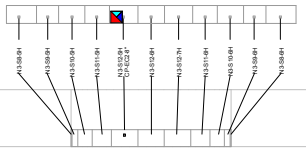


⑦ T 45 L Window Section
1/2" = 1'-0"

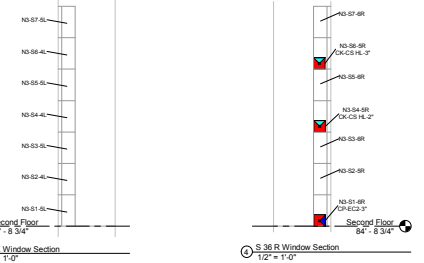
⑧ T 45 R Window Section
1/2" = 1'-0"



④ N3 Third Floor Sill Plan
1/2" = 1'-0"



③ N3 Third Floor Reflected Header Plan
1/2" = 1'-0"

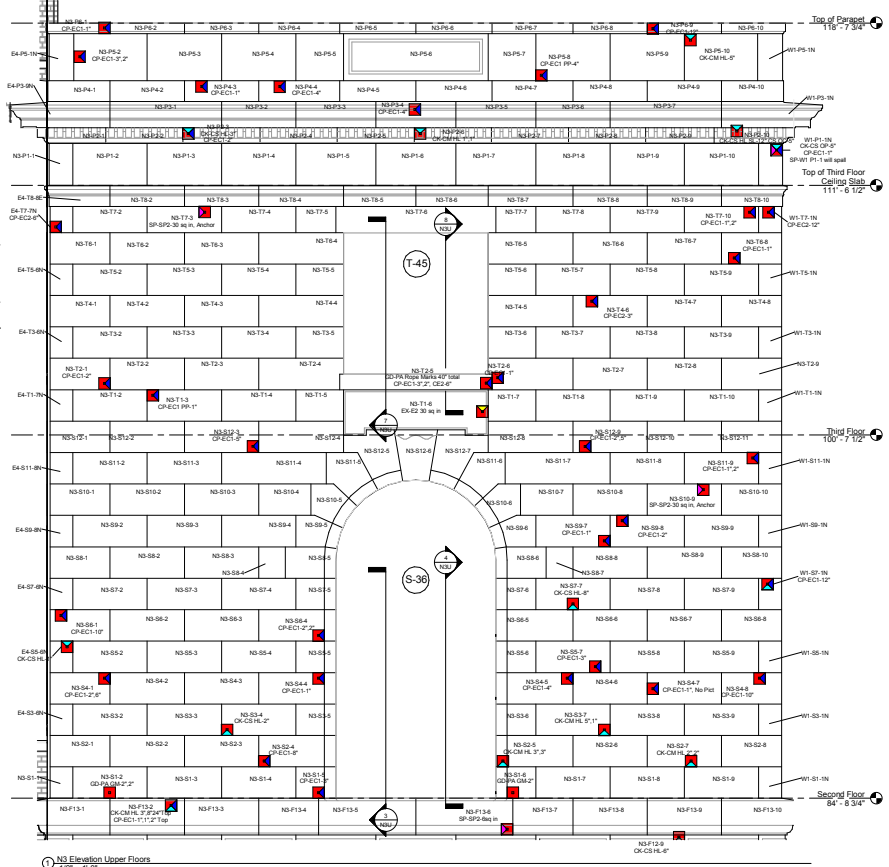


⑤ S 36 L Window Section
1/2" = 1'-0"

⑥ S 36 R Window Section
1/2" = 1'-0"



② N3 Second Floor Sill Plan
1/2" = 1'-0"



① N3 Elevation Upper Floors
1/2" = 1'-0"

MSR 710 South 2nd Street, 8th Floor
Madison, Wisconsin 53701-2380
Architects
Interior and
Urban Design
www.msrblog.com

Civil Engineering and Landscape Architects
Ken Saki Design, Inc
300 South Parkview St
Madison, WI 53703
608.251.3800 W

Structural Engineering Technology, Inc
KWW
1800 Darling Way, Suite
200
Madison, WI 53713
608.222.8800 W

MEP Engineers
MEP Associates
200 Blue Canyon Road, Suite 175
Madison, WI 53713
608.274.2122 W

Lighting Designer
Galina Design
1000 County
Madison, WI 53703
608.261.1000 W

Preservation Architect
Charles Quagliana, AIA
1000 County
Madison, WI 53703
608.261.1000 W

Building Envelope Consultant
InSite Consulting Architects
1111 E. Main Street, Suite 200
Madison, WI 53703
608.261.8000 W

Fire & Code Consultant
Summit Fire Consulting
2000 University Ave.,
St. Paul, MN 55103
651.225.9300 W

Acoustical Consultant
KRA
1601 Chicago Avenue South, Suite 200
Minneapolis, MN 55411
612.338.1000 W

Architect
CIVIL ENGINEERS
1600 Center Street, Suite 201
Madison, WI 53703
608.261.1000 W

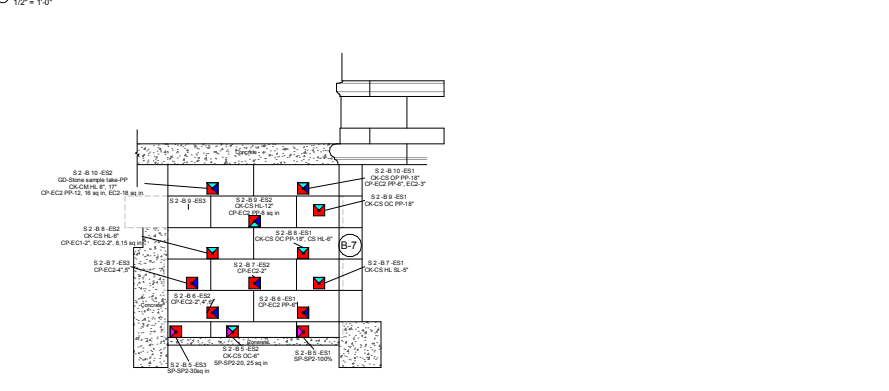
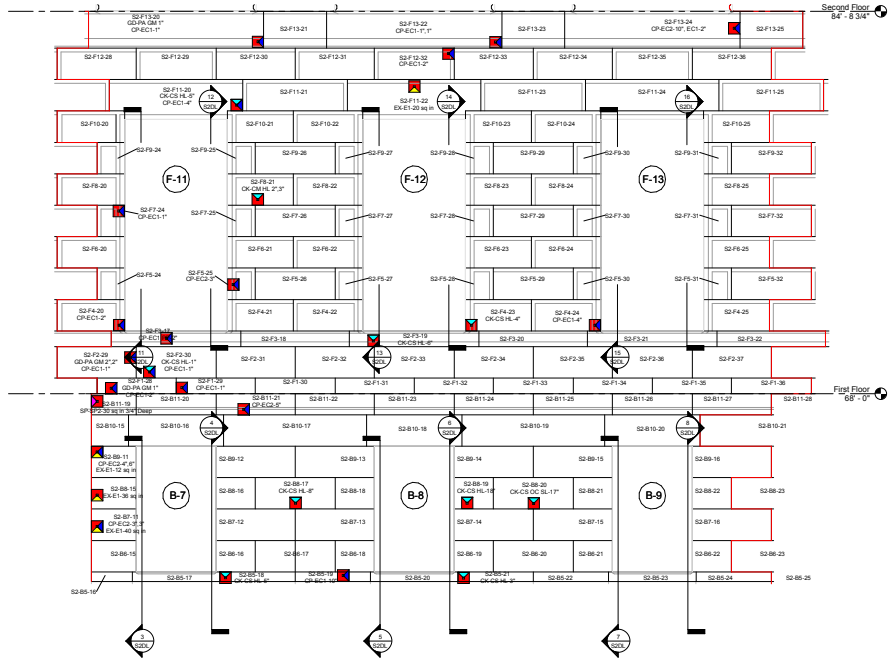
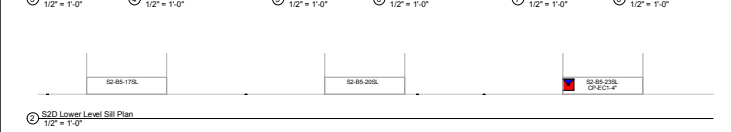
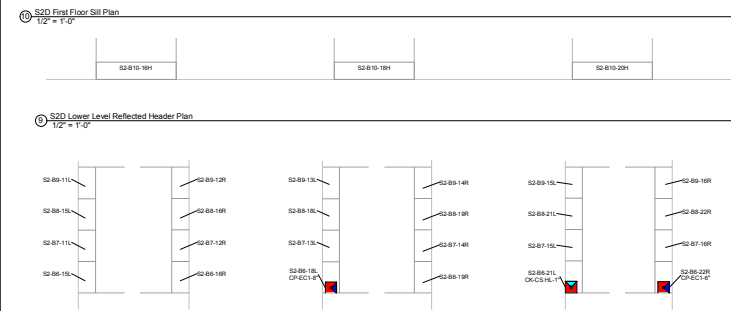
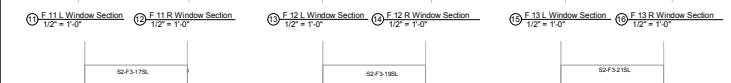
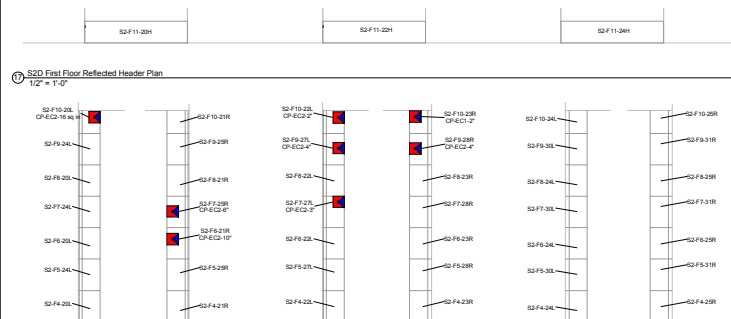
Madison Municipal
Building
215 Martin Luther King, Jr. Blvd
Madison, WI 53703

NO.	DESCRIPTION
1	NO. 1 TO NO. 100
2	NO. 101 TO NO. 200
3	NO. 201 TO NO. 300
4	NO. 301 TO NO. 400
5	NO. 401 TO NO. 500
6	NO. 501 TO NO. 600
7	NO. 601 TO NO. 700
8	NO. 701 TO NO. 800
9	NO. 801 TO NO. 900
10	NO. 901 TO NO. 1000

PROJECT NO.	7939
PROJECT NAME	BID ISSUE
DATE	08/26/2014

Masonry Detail
Elevations /
Sections

N3U



MSR 710 South 2nd Street, 8th Floor
 Milwaukee, Wisconsin 53201-2380
 Architects
 Interiors and
 Urban Design
 www.msrblog.com

Civil Engineering and Landscape Architects
Ken Saki Design, Inc
 500 South Parkview St
 Milwaukee, WI 53219
 414.251.3800

Structural Engineering Technology, Inc
KJWW
 1500 Century Way, Suite
 200
 Madison, WI 53716
 608.223.6600

MEP Engineers
MEP Associates
 500 Blue Canyon Road, Suite 175
 Madison, WI 53713

Lighting Designer
Galina Design
 2500 County
 Madison, WI 53703
 608.261.1000

Preparation Architect
Charles Quagliana, AIA
 1000 University Ave.
 Madison, WI 53706
 608.261.1000

Building Envelope Consultant
InSite Consulting Architects
 1111 E. Main Street, Suite 200
 Madison, WI 53703
 608.261.1000

Fire & Code Consultant
Summit Fire Consulting
 1000 University Ave., 9c
 St. Paul, MN 55103
 651.225.1000

Architectural Consultant
KRA
 600 Chicago Avenue South, Suite 200
 Madison, WI 53704
 608.261.1000

Architect
CIVIL ENGINEERS
 500 County Center, Suite 201
 Madison, WI 53703

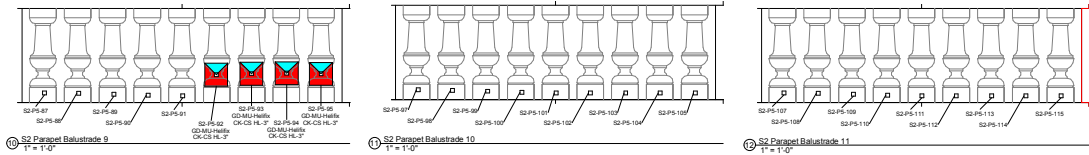
Madison Municipal Building
 215 Martin Luther King, Jr. Blvd
 Madison, WI 53703

NO.	DATE	DESCRIPTION
1	03/21/18	BID ISSUE
2	03/21/18	BID ISSUE
3	03/21/18	BID ISSUE
4	03/21/18	BID ISSUE
5	03/21/18	BID ISSUE
6	03/21/18	BID ISSUE
7	03/21/18	BID ISSUE
8	03/21/18	BID ISSUE
9	03/21/18	BID ISSUE
10	03/21/18	BID ISSUE
11	03/21/18	BID ISSUE
12	03/21/18	BID ISSUE
13	03/21/18	BID ISSUE
14	03/21/18	BID ISSUE
15	03/21/18	BID ISSUE
16	03/21/18	BID ISSUE
17	03/21/18	BID ISSUE
18	03/21/18	BID ISSUE
19	03/21/18	BID ISSUE
20	03/21/18	BID ISSUE
21	03/21/18	BID ISSUE
22	03/21/18	BID ISSUE
23	03/21/18	BID ISSUE
24	03/21/18	BID ISSUE
25	03/21/18	BID ISSUE
26	03/21/18	BID ISSUE
27	03/21/18	BID ISSUE
28	03/21/18	BID ISSUE
29	03/21/18	BID ISSUE
30	03/21/18	BID ISSUE
31	03/21/18	BID ISSUE
32	03/21/18	BID ISSUE
33	03/21/18	BID ISSUE
34	03/21/18	BID ISSUE
35	03/21/18	BID ISSUE
36	03/21/18	BID ISSUE
37	03/21/18	BID ISSUE
38	03/21/18	BID ISSUE
39	03/21/18	BID ISSUE
40	03/21/18	BID ISSUE
41	03/21/18	BID ISSUE
42	03/21/18	BID ISSUE
43	03/21/18	BID ISSUE
44	03/21/18	BID ISSUE
45	03/21/18	BID ISSUE
46	03/21/18	BID ISSUE
47	03/21/18	BID ISSUE
48	03/21/18	BID ISSUE
49	03/21/18	BID ISSUE
50	03/21/18	BID ISSUE
51	03/21/18	BID ISSUE
52	03/21/18	BID ISSUE
53	03/21/18	BID ISSUE
54	03/21/18	BID ISSUE
55	03/21/18	BID ISSUE
56	03/21/18	BID ISSUE
57	03/21/18	BID ISSUE
58	03/21/18	BID ISSUE
59	03/21/18	BID ISSUE
60	03/21/18	BID ISSUE
61	03/21/18	BID ISSUE
62	03/21/18	BID ISSUE
63	03/21/18	BID ISSUE
64	03/21/18	BID ISSUE
65	03/21/18	BID ISSUE
66	03/21/18	BID ISSUE
67	03/21/18	BID ISSUE
68	03/21/18	BID ISSUE
69	03/21/18	BID ISSUE
70	03/21/18	BID ISSUE
71	03/21/18	BID ISSUE
72	03/21/18	BID ISSUE
73	03/21/18	BID ISSUE
74	03/21/18	BID ISSUE
75	03/21/18	BID ISSUE
76	03/21/18	BID ISSUE
77	03/21/18	BID ISSUE
78	03/21/18	BID ISSUE
79	03/21/18	BID ISSUE
80	03/21/18	BID ISSUE
81	03/21/18	BID ISSUE
82	03/21/18	BID ISSUE
83	03/21/18	BID ISSUE
84	03/21/18	BID ISSUE
85	03/21/18	BID ISSUE
86	03/21/18	BID ISSUE
87	03/21/18	BID ISSUE
88	03/21/18	BID ISSUE
89	03/21/18	BID ISSUE
90	03/21/18	BID ISSUE
91	03/21/18	BID ISSUE
92	03/21/18	BID ISSUE
93	03/21/18	BID ISSUE
94	03/21/18	BID ISSUE
95	03/21/18	BID ISSUE
96	03/21/18	BID ISSUE
97	03/21/18	BID ISSUE
98	03/21/18	BID ISSUE
99	03/21/18	BID ISSUE
100	03/21/18	BID ISSUE

Project No: 7939
 Project Name: BID ISSUE
 Revision No: 1

Masonry Detail Elevations / Sections

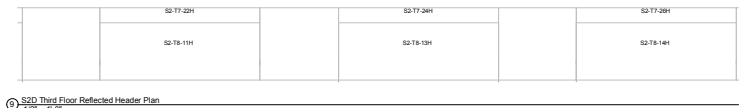
S2DL



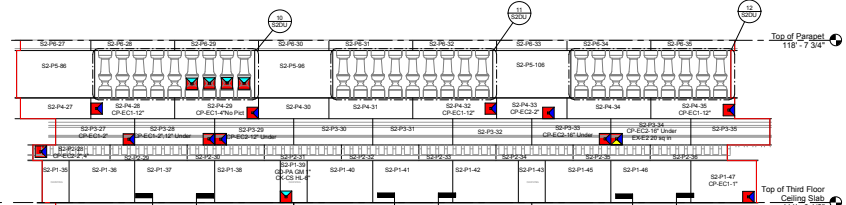
① S2 Parapet Balustrade 9
1/2" = 1'-0"

② S2 Parapet Balustrade 10
1/2" = 1'-0"

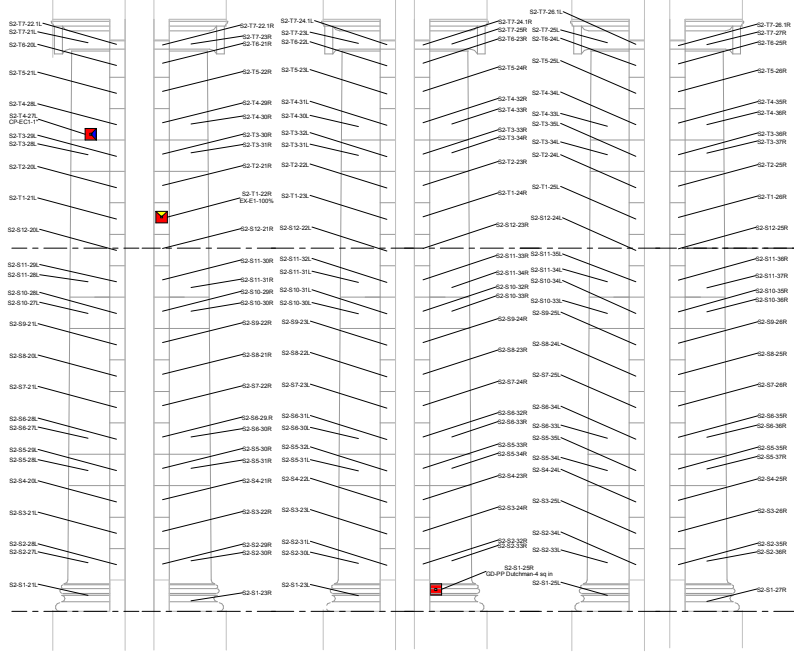
③ S2 Parapet Balustrade 11
1/2" = 1'-0"



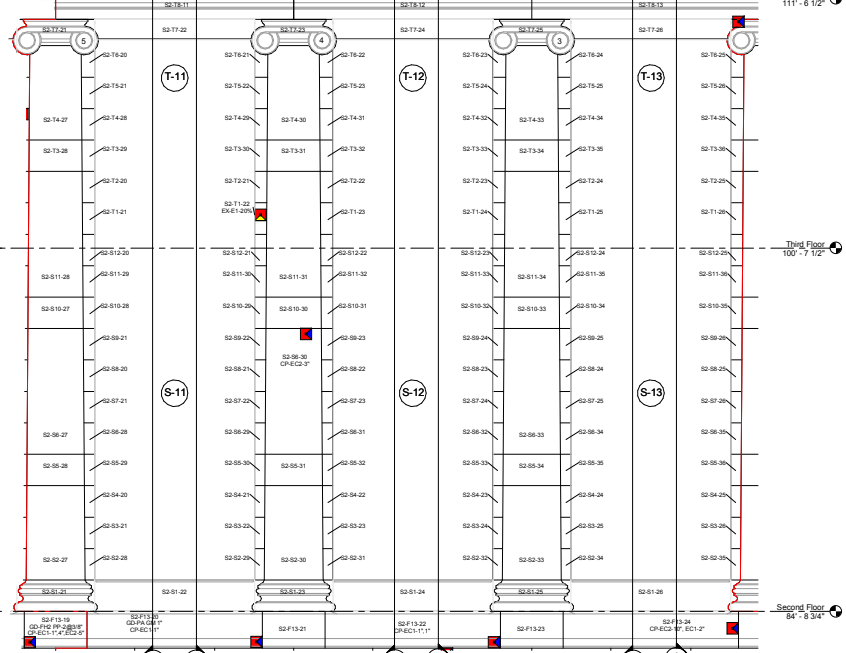
④ S2D Third Floor Reflected Header Plan
1/2" = 1'-0"



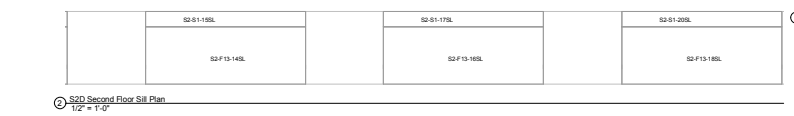
⑤ S2D Elevation Upper Floors
1/2" = 1'-0"



⑥ S2D Second Floor Sill Plan
1/2" = 1'-0"



⑦ S2D Elevation Upper Floors
1/2" = 1'-0"



⑧ S2D Second Floor Sill Plan
1/2" = 1'-0"

MSR 710 South 2nd Street, 8th Floor
Madison, WI 53703-1380
Architects
Interior and
Urban Design
www.msrdsg.com

Ken Saki Design, Inc.
500 South Parkview St
Madison, WI 53703
608.251.3800

Structural Engineering Technology, Inc.
KJWW
1800 Goring Way, Suite
200
Madison, WI 53713
608.222.0000

MEP Engineers
MEP Associates
500 Blue Center Road, Suite 175
Madison, WI 53705
608.276.9320

Lighting Designer
Galina Design
1000 Orange
Madison, WI 53703
608.261.5500

Preservation Architect
Charles Quagliana, AIA
1000 Orange
Madison, WI 53703
608.261.5500

Building Envelope Consultant
InSite Consulting Architects
111 E. Main Street, Suite 200
Madison, WI 53703
608.261.5500

Fire & Code Consultant
Summit Fire Consulting
111 E. Main Street, Suite 200
Madison, WI 53703
608.261.5500

Architectural Consultant
KRA
1000 Orange Avenue, Suite 200
Madison, WI 53703
608.261.5500

MEP Engineers
CIVIL ENGINEERS
1000 Orange Avenue, Suite 200
Madison, WI 53703
608.261.5500

Architectural Consultant
KRA
1000 Orange Avenue, Suite 200
Madison, WI 53703
608.261.5500

MEP Engineers
CIVIL ENGINEERS
1000 Orange Avenue, Suite 200
Madison, WI 53703
608.261.5500

Architectural Consultant
KRA
1000 Orange Avenue, Suite 200
Madison, WI 53703
608.261.5500

MEP Engineers
CIVIL ENGINEERS
1000 Orange Avenue, Suite 200
Madison, WI 53703
608.261.5500

Architectural Consultant
KRA
1000 Orange Avenue, Suite 200
Madison, WI 53703
608.261.5500

MEP Engineers
CIVIL ENGINEERS
1000 Orange Avenue, Suite 200
Madison, WI 53703
608.261.5500

Architectural Consultant
KRA
1000 Orange Avenue, Suite 200
Madison, WI 53703
608.261.5500

MEP Engineers
CIVIL ENGINEERS
1000 Orange Avenue, Suite 200
Madison, WI 53703
608.261.5500

Architectural Consultant
KRA
1000 Orange Avenue, Suite 200
Madison, WI 53703
608.261.5500

MEP Engineers
CIVIL ENGINEERS
1000 Orange Avenue, Suite 200
Madison, WI 53703
608.261.5500

Architectural Consultant
KRA
1000 Orange Avenue, Suite 200
Madison, WI 53703
608.261.5500

MEP Engineers
CIVIL ENGINEERS
1000 Orange Avenue, Suite 200
Madison, WI 53703
608.261.5500

Architectural Consultant
KRA
1000 Orange Avenue, Suite 200
Madison, WI 53703
608.261.5500

MEP Engineers
CIVIL ENGINEERS
1000 Orange Avenue, Suite 200
Madison, WI 53703
608.261.5500

Architectural Consultant
KRA
1000 Orange Avenue, Suite 200
Madison, WI 53703
608.261.5500

MEP Engineers
CIVIL ENGINEERS
1000 Orange Avenue, Suite 200
Madison, WI 53703
608.261.5500

Architectural Consultant
KRA
1000 Orange Avenue, Suite 200
Madison, WI 53703
608.261.5500

MEP Engineers
CIVIL ENGINEERS
1000 Orange Avenue, Suite 200
Madison, WI 53703
608.261.5500

Architectural Consultant
KRA
1000 Orange Avenue, Suite 200
Madison, WI 53703
608.261.5500

MEP Engineers
CIVIL ENGINEERS
1000 Orange Avenue, Suite 200
Madison, WI 53703
608.261.5500

Architectural Consultant
KRA
1000 Orange Avenue, Suite 200
Madison, WI 53703
608.261.5500

MEP Engineers
CIVIL ENGINEERS
1000 Orange Avenue, Suite 200
Madison, WI 53703
608.261.5500

Architectural Consultant
KRA
1000 Orange Avenue, Suite 200
Madison, WI 53703
608.261.5500

MEP Engineers
CIVIL ENGINEERS
1000 Orange Avenue, Suite 200
Madison, WI 53703
608.261.5500

Architectural Consultant
KRA
1000 Orange Avenue, Suite 200
Madison, WI 53703
608.261.5500

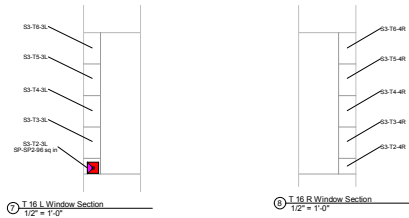
MEP Engineers
CIVIL ENGINEERS
1000 Orange Avenue, Suite 200
Madison, WI 53703
608.261.5500

Madison Municipal Building
215 Martin Luther King, Jr. Blvd
Madison, WI 53703

7939
BID ISSUE
Masonry Detail Elevations / Sections
S2DU



S3 Third Floor Reflected Header Plan
1/2" = 1'-0"

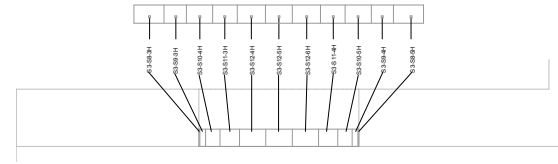


T 16 L Window Section
1/2" = 1'-0"

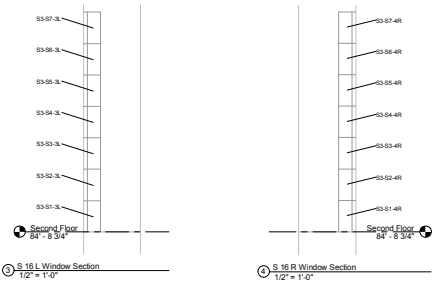
T 16 R Window Section
1/2" = 1'-0"



S3 Third Floor Sill Plan
1/2" = 1'-0"



S3 Second Floor Reflected Header Plan
1/2" = 1'-0"

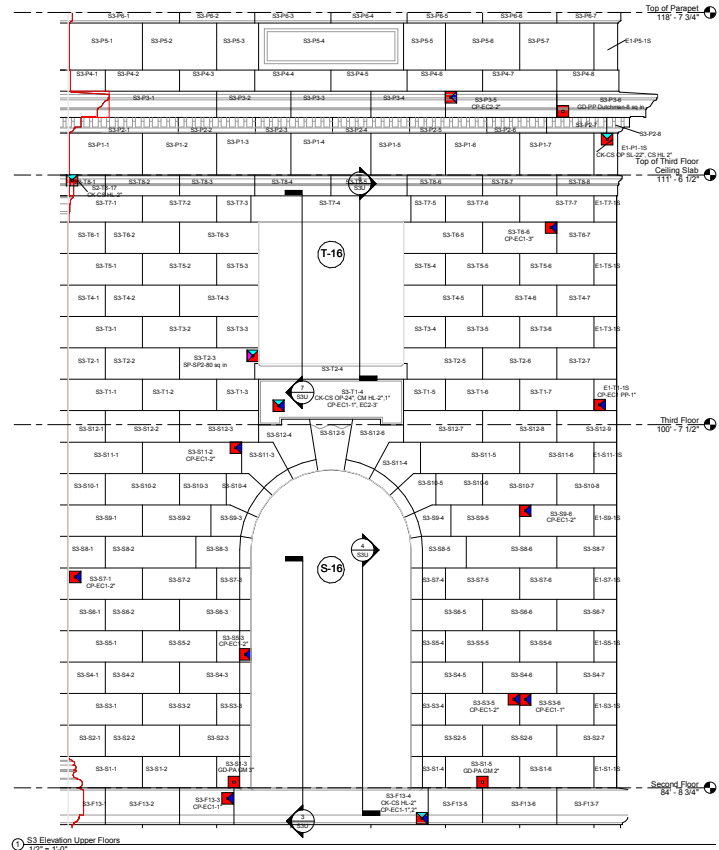


S 16 L Window Section
1/2" = 1'-0"

S 16 R Window Section
1/2" = 1'-0"



S3 Second Floor Sill Plan
1/2" = 1'-0"



S3 Elevation Upper Floors
1/2" = 1'-0"

MSR 710 South 2nd Street, 8th Floor
Madison, WI 53703
Architectural Services and Urban Design
www.msrblog.com

Ken Saki Design, Inc.
300 South Parkview St
Madison, WI 53713
608.251.3800

KJWW
1500 Conroy Way, Suite 200
Madison, WI 53713
608.222.6000

MEP Engineers
MEP Associates
500 Blue Canyon Road, Suite 175
Madison, WI 53713
608.274.9320

Lighting Designer
Gallina Design
1020 Conroy
Madison, WI 53713
608.261.3334

Preparation Architect
Charles Quagliana, AIA
1000 University Ave.
Madison, WI 53706
608.261.3334

Building Envelope Consultant
InSite Consulting Architects
1121 East Street, Suite 200
Madison, WI 53703
608.261.6271

Fire & Code Consultant
Summit Fire Consulting
200 University Ave., 9c
St. Paul, MN 55102
651.221.9374

Acoustical Consultant
KRA
400 Chicago Avenue South, Suite 200
Madison, WI 53704
735.2600

Madison
CIVIL ENGINEERS
500 Cooper Drive, Suite 201
Madison, WI 53705

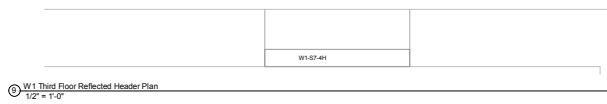
Madison Municipal Building
215 Martin Luther King, Jr. Blvd
Madison, WI 53703

NO.	DESCRIPTION	DATE
1	ISSUE FOR BID	10/20/2010
2	ISSUE FOR BID	10/20/2010
3	ISSUE FOR BID	10/20/2010
4	ISSUE FOR BID	10/20/2010
5	ISSUE FOR BID	10/20/2010
6	ISSUE FOR BID	10/20/2010
7	ISSUE FOR BID	10/20/2010
8	ISSUE FOR BID	10/20/2010
9	ISSUE FOR BID	10/20/2010
10	ISSUE FOR BID	10/20/2010
11	ISSUE FOR BID	10/20/2010
12	ISSUE FOR BID	10/20/2010
13	ISSUE FOR BID	10/20/2010
14	ISSUE FOR BID	10/20/2010
15	ISSUE FOR BID	10/20/2010
16	ISSUE FOR BID	10/20/2010
17	ISSUE FOR BID	10/20/2010
18	ISSUE FOR BID	10/20/2010
19	ISSUE FOR BID	10/20/2010
20	ISSUE FOR BID	10/20/2010
21	ISSUE FOR BID	10/20/2010
22	ISSUE FOR BID	10/20/2010
23	ISSUE FOR BID	10/20/2010
24	ISSUE FOR BID	10/20/2010
25	ISSUE FOR BID	10/20/2010
26	ISSUE FOR BID	10/20/2010
27	ISSUE FOR BID	10/20/2010
28	ISSUE FOR BID	10/20/2010
29	ISSUE FOR BID	10/20/2010
30	ISSUE FOR BID	10/20/2010
31	ISSUE FOR BID	10/20/2010
32	ISSUE FOR BID	10/20/2010
33	ISSUE FOR BID	10/20/2010
34	ISSUE FOR BID	10/20/2010
35	ISSUE FOR BID	10/20/2010
36	ISSUE FOR BID	10/20/2010
37	ISSUE FOR BID	10/20/2010
38	ISSUE FOR BID	10/20/2010
39	ISSUE FOR BID	10/20/2010
40	ISSUE FOR BID	10/20/2010
41	ISSUE FOR BID	10/20/2010
42	ISSUE FOR BID	10/20/2010
43	ISSUE FOR BID	10/20/2010
44	ISSUE FOR BID	10/20/2010
45	ISSUE FOR BID	10/20/2010
46	ISSUE FOR BID	10/20/2010
47	ISSUE FOR BID	10/20/2010
48	ISSUE FOR BID	10/20/2010
49	ISSUE FOR BID	10/20/2010
50	ISSUE FOR BID	10/20/2010
51	ISSUE FOR BID	10/20/2010
52	ISSUE FOR BID	10/20/2010
53	ISSUE FOR BID	10/20/2010
54	ISSUE FOR BID	10/20/2010
55	ISSUE FOR BID	10/20/2010
56	ISSUE FOR BID	10/20/2010
57	ISSUE FOR BID	10/20/2010
58	ISSUE FOR BID	10/20/2010
59	ISSUE FOR BID	10/20/2010
60	ISSUE FOR BID	10/20/2010
61	ISSUE FOR BID	10/20/2010
62	ISSUE FOR BID	10/20/2010
63	ISSUE FOR BID	10/20/2010
64	ISSUE FOR BID	10/20/2010
65	ISSUE FOR BID	10/20/2010
66	ISSUE FOR BID	10/20/2010
67	ISSUE FOR BID	10/20/2010
68	ISSUE FOR BID	10/20/2010
69	ISSUE FOR BID	10/20/2010
70	ISSUE FOR BID	10/20/2010
71	ISSUE FOR BID	10/20/2010
72	ISSUE FOR BID	10/20/2010
73	ISSUE FOR BID	10/20/2010
74	ISSUE FOR BID	10/20/2010
75	ISSUE FOR BID	10/20/2010
76	ISSUE FOR BID	10/20/2010
77	ISSUE FOR BID	10/20/2010
78	ISSUE FOR BID	10/20/2010
79	ISSUE FOR BID	10/20/2010
80	ISSUE FOR BID	10/20/2010
81	ISSUE FOR BID	10/20/2010
82	ISSUE FOR BID	10/20/2010
83	ISSUE FOR BID	10/20/2010
84	ISSUE FOR BID	10/20/2010
85	ISSUE FOR BID	10/20/2010
86	ISSUE FOR BID	10/20/2010
87	ISSUE FOR BID	10/20/2010
88	ISSUE FOR BID	10/20/2010
89	ISSUE FOR BID	10/20/2010
90	ISSUE FOR BID	10/20/2010
91	ISSUE FOR BID	10/20/2010
92	ISSUE FOR BID	10/20/2010
93	ISSUE FOR BID	10/20/2010
94	ISSUE FOR BID	10/20/2010
95	ISSUE FOR BID	10/20/2010
96	ISSUE FOR BID	10/20/2010
97	ISSUE FOR BID	10/20/2010
98	ISSUE FOR BID	10/20/2010
99	ISSUE FOR BID	10/20/2010
100	ISSUE FOR BID	10/20/2010

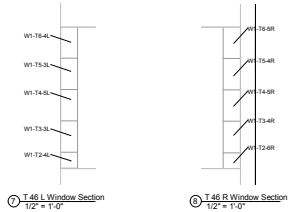
PROJECT NO. 7939
PROJECT PHASE BID ISSUE
DATE 10/20/2010

Masonry Detail Elevations / Sections

S3U

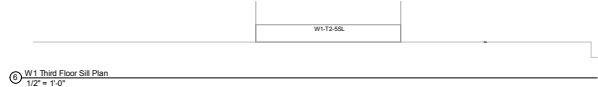


W1 Third Floor Reflected Header Plan
1/2" = 1'-0"

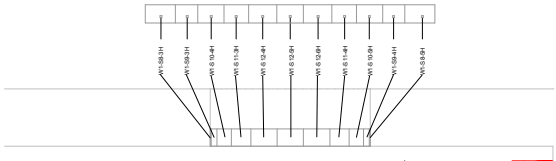


T 46 L Window Section
1/2" = 1'-0"

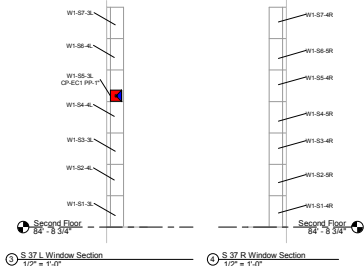
T 46 R Window Section
1/2" = 1'-0"



W1 Third Floor Sill Plan
1/2" = 1'-0"

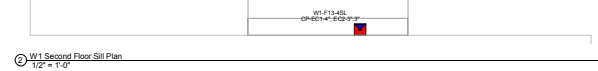


W1 Second Floor Reflected Header Plan
1/2" = 1'-0"

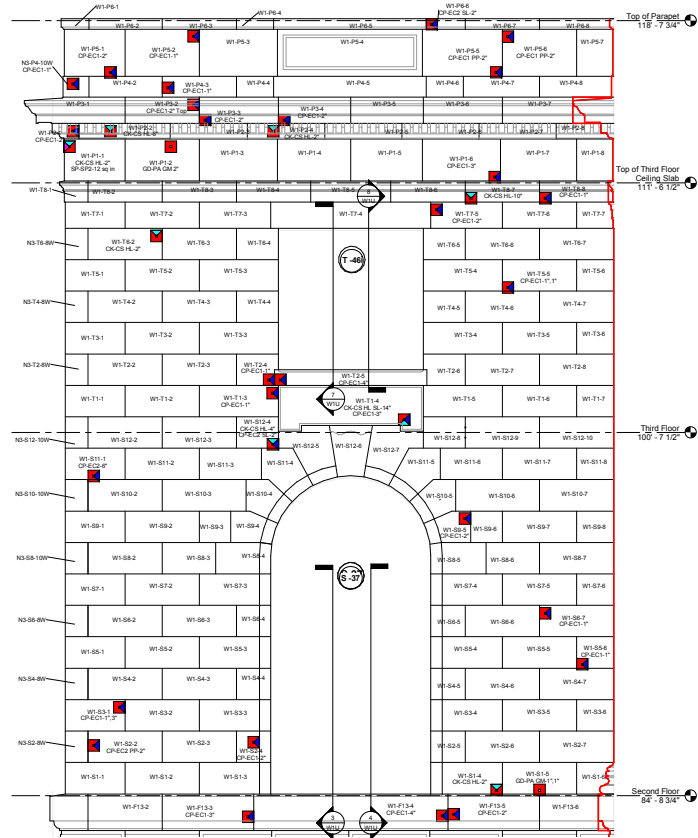


S 37 L Window Section
1/2" = 1'-0"

S 37 R Window Section
1/2" = 1'-0"



W1 Second Floor Sill Plan
1/2" = 1'-0"



W1 Elevation Upper Floors
1/2" = 1'-0"

MSR 710 South 2nd Street, 8th Floor
Madison, WI 53703
Architects
Hortens and
Urban Design
www.msrblog.com

Ken Saki Design, Inc.

KJWW

MEP Engineers

MEP Associates

Lighting Designer

Galina Design

Preparation Architect

Charles Quagliana, AIA

InSite Consulting Architects

Summit Fire Consulting

RRR

CIVIL ENGINEERS

Madison Municipal Building

215 Martin Luther King, Jr. Blvd
Madison, WI 53703

7899

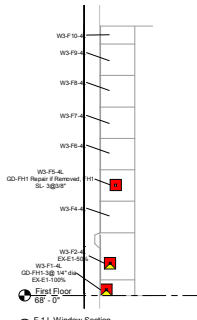
BID ISSUE

Masonry Detail Elevations / Sections

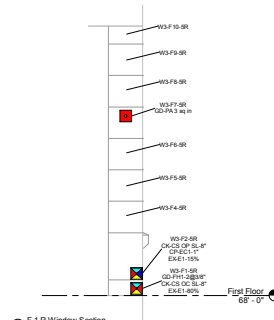
W1U



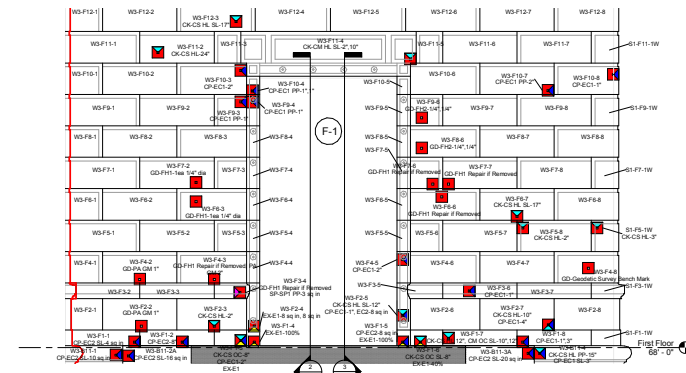
W3 First Floor Reflected Header Plan
1/2" = 1'-0"



F-11 Window Section
1/2" = 1'-0"



F-1 R Window Section
1/2" = 1'-0"



W3 Elevation Lower Floors
1/2" = 1'-0"

MSR 710 South 2nd Street, 8th Floor
Milwaukee, Wisconsin 53201-3300
Architects
Interior and
Urban Design
www.msrblog.com

Civil Engineering and Landscape Architects
Ken Saki Design, Inc

300 South Parkview Dr
Madison, WI 53713
608.251.3800 W

Structural Engineering Technology, Inc

KWW

1000 Century Way, Suite
200
Madison, WI 53716
608.222.8800 W

MEP Engineers

MEP Associates

500 Blue Canyon Road, Suite 175
Madison, WI 53713
608.278.9332 W

Lighting Designer

Gallina Design

1000 Century
Way, Suite 200
Madison, WI 53716
608.222.8800 W

Preservation Architect

Charles Quagliana, AIA

1001 University Ave.
Madison, WI 53706
608.262.1000 W

Building Envelope Consultant

InSite Consulting Architects

1111 East Street, Suite 200
Madison, WI 53703
608.262.8222 W

Fire & Code Consultant

Summit Fire Consulting

2111 University Ave., W
St. Paul, MN 55103
612.225.9370 W

Acoustical Consultant

KRA

1001 Chicago Avenue South, Suite 200
Wauwatosa, WI 53090
715.224.8800 W

Structural

CIVIL ENGINEERS

500 South Parkview, Suite 201
Madison, WI 53713
608.222.8800 W

Architect

Madison Municipal Building

215 Martin Luther King, Jr. Blvd
Madison, WI 53703

Architect

CIVIL ENGINEERS

500 South Parkview, Suite 201
Madison, WI 53713
608.222.8800 W

Architect

CIVIL ENGINEERS

500 South Parkview, Suite 201
Madison, WI 53713
608.222.8800 W

Architect

CIVIL ENGINEERS

500 South Parkview, Suite 201
Madison, WI 53713
608.222.8800 W

Architect

CIVIL ENGINEERS

500 South Parkview, Suite 201
Madison, WI 53713
608.222.8800 W

Architect

CIVIL ENGINEERS

500 South Parkview, Suite 201
Madison, WI 53713
608.222.8800 W

Architect

CIVIL ENGINEERS

500 South Parkview, Suite 201
Madison, WI 53713
608.222.8800 W

Architect

CIVIL ENGINEERS

500 South Parkview, Suite 201
Madison, WI 53713
608.222.8800 W

Architect

CIVIL ENGINEERS

500 South Parkview, Suite 201
Madison, WI 53713
608.222.8800 W

Architect

CIVIL ENGINEERS

500 South Parkview, Suite 201
Madison, WI 53713
608.222.8800 W

Architect

CIVIL ENGINEERS

500 South Parkview, Suite 201
Madison, WI 53713
608.222.8800 W

Architect

CIVIL ENGINEERS

500 South Parkview, Suite 201
Madison, WI 53713
608.222.8800 W

Architect

CIVIL ENGINEERS

500 South Parkview, Suite 201
Madison, WI 53713
608.222.8800 W

Architect

CIVIL ENGINEERS

500 South Parkview, Suite 201
Madison, WI 53713
608.222.8800 W

Architect

CIVIL ENGINEERS

500 South Parkview, Suite 201
Madison, WI 53713
608.222.8800 W

Architect

CIVIL ENGINEERS

500 South Parkview, Suite 201
Madison, WI 53713
608.222.8800 W

Architect

CIVIL ENGINEERS

500 South Parkview, Suite 201
Madison, WI 53713
608.222.8800 W

Architect

CIVIL ENGINEERS

500 South Parkview, Suite 201
Madison, WI 53713
608.222.8800 W

Architect

CIVIL ENGINEERS

500 South Parkview, Suite 201
Madison, WI 53713
608.222.8800 W

Architect

CIVIL ENGINEERS

500 South Parkview, Suite 201
Madison, WI 53713
608.222.8800 W

Architect

CIVIL ENGINEERS

500 South Parkview, Suite 201
Madison, WI 53713
608.222.8800 W

Architect

CIVIL ENGINEERS

500 South Parkview, Suite 201
Madison, WI 53713
608.222.8800 W

Architect

CIVIL ENGINEERS

500 South Parkview, Suite 201
Madison, WI 53713
608.222.8800 W

Architect

CIVIL ENGINEERS

500 South Parkview, Suite 201
Madison, WI 53713
608.222.8800 W

Masonry Detail
Elevations /
Sections

W3L

